

**SOCIAL-ECONOMIC DETERMINANTS OF THE SUSTAINABILITY OF  
DEVELOPMENT PROJECTS AMONG THE BATWA IN GITEGA PROVINCE,  
BURUNDI**

**RAYMOND NGENDAKUMANA**



**A PROJECT SUBMITTED IN PARTIAL FULFILMENT OF THE  
REQUIREMENTS FOR THE AWARD OF MASTER OF ARTS  
DEGREE IN DEVELOPMENT STUDIES OF  
MOUNT KENYA UNIVERSITY**

**MAY, 2025**

## DECLARATION

### Declaration

This proposal is my original work and has not been presented for a degree in any other University or for any other award.

Signature:



Date: 03/06/ 2025

**Raymond Ngendakumana**  
**MDS/2019/45107**

### Approval

I confirm that the work presented in this proposal is carried out by the candidate under my supervision.

Signature:



Date: 03.06.2025

**Prof. Kennedy Mutundu**  
**Department of Social Development Studies**  
**School of Social Sciences**  
**Mount Kenya University**

## DEDICATION

This project is dedicated to my wife Excellente Ngarukira, and my children Joshua, Caleb, Solomon, Sarah and Naomie for their support, patience and encouragement.



## ACKNOWLEDGEMENT

I hereby want to deeply thank my supervisor Associate Professor Kennedy Mutundu. Thanks to his pieces of advice and assistance during the planning of this proposal writing. Moreover, I express my appreciation to Mount Kenya University staff for their unlimited assistance in preparing this research project.



## ABSTRACT

Sustainability of human development projects refers to the ability of maintaining the achievements manifested in the change of living conditions of the projects 'beneficiaries which would stay there even when the projects phase out. In Burundi, especially in Gitega province, many government technical sectors, NGOs and private donors have been implementing uncountable development projects among Batwa communities. Unfortunately, they have never been sustainable. Therefore, the purpose of this study was to find out why human development projects implemented among the Batwa have not been sustainable. The specific objectives of the study were to: examine the influence of education levels on the sustainability of human development projects among the Batwa, analyse the influence of land scarcity on the sustainability of development projects among Batwa, identify the influence of cultural practices on the sustainability of human development projects among the Batwa, and to find out the influence of social marginalization on sustainability of human development projects among Batwa communities. The study was anchored under the relational and explanatory theories. The study used descriptive research design. The target population was 300 individuals. A purposive sampling was used to draw the sample size of 129 respondents. Questionnaires were main tools for data collection. The collected data was analyzed using SPSS (Statistical package for the social sciences). Results were presented using frequency tables, and pie-charts. The study will be of great importance to local administration as it will guide them on how to concentrate on the tactics for achieving greater effectiveness and efficiency in order to enhance sustainability of human development projects among the Batwa. The findings R illustrated a simple relationship which is .857 which represented a great extent of correlation of the variables. Regression indicated that the relationship was statistically significance since  $p < 0.000$ , which is less than 0.005, and shows that, entirely, the regression model significantly positively predicted the results variable, meaning that the model was a perfect fit for the data. As per findings the study concluded that there was a positively significant relationship between socio economic factors and sustainability of projects considering that all the p-values were  $< 0.005$  and  $< 0.01$ . From the findings the study concluded that socio-economic factors are significant in the sustainability of projects. The study recommended that much attention should be given to the socio-economic factors since they influence the sustainability of projects, failure to which the projects will be started and end up not benefiting the community. The study may be done in other community projects to find out if similar results will be realized. The study also concentrated on effect of social economic factors on sustainability of projects, it is therefore, important to research on other factors that affect sustainability such risk analysis, and financial resources.

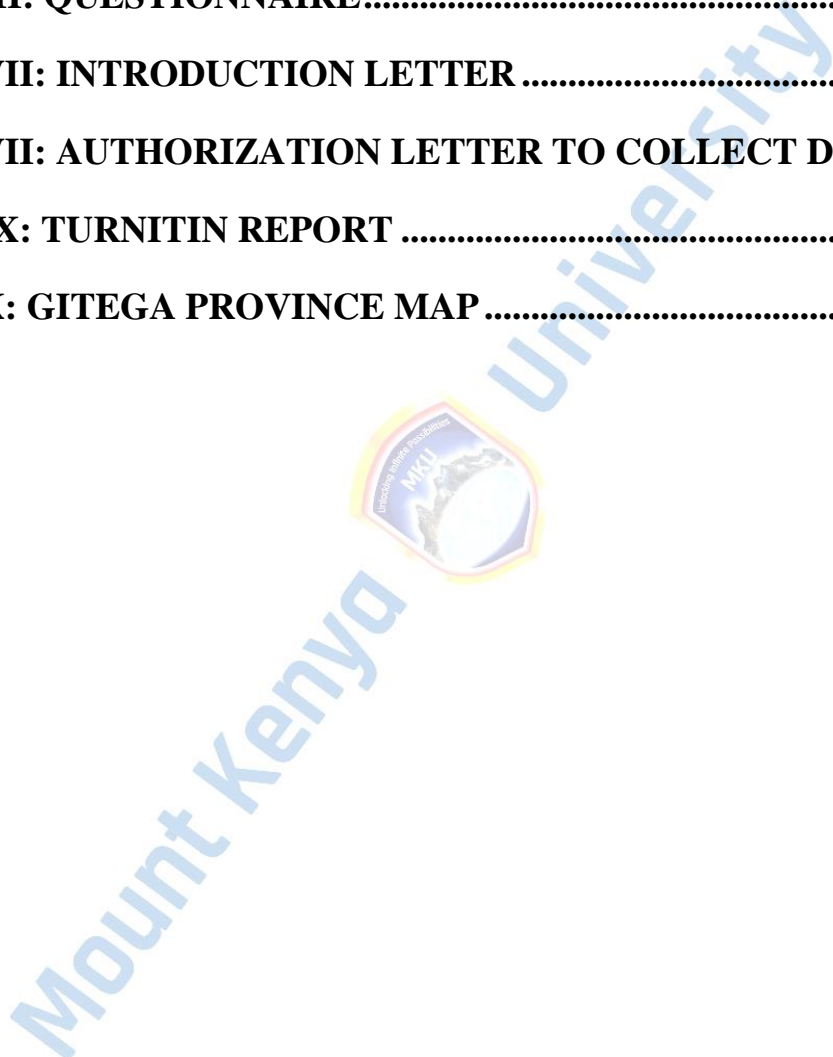
## TABLE OF CONTENT

<b>DEDICATION.....</b>	<b>iii</b>
<b>ACKNOWLEDGEMENT.....</b>	<b>iv</b>
<b>ABSTRACT.....</b>	<b>v</b>
<b>TABLE OF CONTENT.....</b>	<b>vi</b>
<b>LIST OF TABLES.....</b>	<b>x</b>
<b>LIST OF FIGURES.....</b>	<b>xi</b>
<b>LIST OF ABBREVIATIONS AND ACRONYMS.....</b>	<b>xii</b>
<b>CHAPTER ONE:.....</b>	<b>1</b>
<b>INTRODUCTION.....</b>	<b>1</b>
1.1 Background to the Study.....	1
1.2 Statement of the Problem.....	6
1.3 Purpose of the study.....	8
1.4 Research Objectives.....	8
1.5 Research Questions.....	8
1.6 Significance of the Study.....	9
1.7 Scope of the Study.....	10
1.8. Limitations and Delimitations of the Study.....	11
1.9. Assumptions of the study.....	12
1.10 Operational Definition of Key Terms.....	13
<b>CHAPTER TWO.....</b>	<b>15</b>
<b>LITERATURE REVIEW.....</b>	<b>15</b>

2.1 Introduction.....	15
2.2 Empirical Literature Review.....	15
2.2.1 Education Levels and Sustainability of Development Projects .....	15
2.2.2 Land Tenure and Sustainability of Projects .....	19
2.2.3 Cultural Practices and Sustainability of Development Projects.....	23
2.2.4 Social Marginalization and Sustainability of Development Projects.....	26
2.3 Theoretical Literature Review .....	29
2.3.1 Relational theory .....	29
2.3.2 Theory of Change.....	31
2.3.3 Stakeholder Theory and Project Management as a Behaviour for Sustainability.....	33
2.4 Conceptual Framework.....	36
2.4.1. Education Levels.....	37
2.4.2. Land Tenure .....	37
2.4.3. Cultural practices.....	37
2.4.4. Social marginalization.....	38
2.5 Recap; Gaps.....	38
<b>CHAPTER THREE .....</b>	<b>40</b>
<b>RESEARCH METHODOLOGY .....</b>	<b>40</b>
3.1 Introduction .....	40
3.2 Research Design .....	40
3.3 Location of the Study .....	41
3.4 Target Population .....	42
3.5 Sampling Design and Procedure.....	43
3.6 Sample Size .....	44
3.7 Data Collection Instruments .....	45

3.7.1 Administration Data Collection Instruments.....	45
3.8 Validity and Reliability .....	45
3.9 Data Analysis.....	47
3.10 Ethical Consideration .....	48
<b>CHAPTER FOUR.....</b>	<b>49</b>
<b>RESEARCH FINDINGS AND DISCUSSIONS .....</b>	<b>49</b>
4.1 Introduction .....	49
4.2. Presentation of Demographic Information .....	49
4.3 Analysis of Study Objectives .....	52
4.3.1. Objective One; Whether Education Level Affected Project Sustainability .....	52
4.3.2 Objective Two; Whether Land Tenure affected sustainability of Projects .....	55
4.3.3 Objective 3; Cultural Practices on sustainability of Projects .....	57
4.3.4 Objective 4; Social Marginalization and sustainability of projects .....	59
4.4 Regression Analysis .....	62
<b>CHAPTER FIVE.....</b>	<b>65</b>
<b>SUMMARY, CONCLUSIONS AND RECOMMENDATIONS .....</b>	<b>65</b>
5.1 Introduction .....	65
5.2 Summary of the Findings .....	65
5.2.1 Effect of Education Levels and Sustainability of Projects .....	65
5.2.2 Effect of Land Tenure on Sustainability of Projects .....	66
5.2.3 Effect of Cultural Practices on Sustainability of Projects .....	66
5.3.4 Effect of Social Marginalization on Sustainability of Projects .....	67
5.4 Conclusions .....	68
5.5 Recommendations .....	68
5.5 Suggestions for Further Study .....	69

<b>APPENDICES .....</b>	<b>79</b>
<b>APPENDIX I: INTRODUCTION LETTER.....</b>	<b>79</b>
<b>APPENDIX II: CONSENT FORM FOR PARTICIPATION IN RESEARCH</b>	
<b>80</b>	
<b>APPENDIX III: QUESTIONNAIRE.....</b>	<b>81</b>
<b>APPENDIX VII: INTRODUCTION LETTER .....</b>	<b>87</b>
<b>APPENDIX VII: AUTHORIZATION LETTER TO COLLECT DATA .....</b>	<b>88</b>
<b>APPENDIX IX: TURNITIN REPORT .....</b>	<b>89</b>
<b>APPENDIX X: GITEGA PROVINCE MAP.....</b>	<b>91</b>



## LIST OF TABLES

Table 1:Sample Size .....	44
Table 2 Gender of Respondents .....	49
Table 3: Education Level of the Respondents .....	50
Table 4: Work Experience of the Respondents.....	51
Table 5: Age of the Respondents .....	51
Table 6: Work Title of the Respondents .....	52
Table 7: Extent to which Education Level Affected Sustainability of Projects .....	54
Table 8: Extent to which Land Tenure affected sustainability of Projects .....	56
Table 9: Extent to which Cultural Practices affected sustainability of Projects .....	58
Table 10: Extent to which Social Marginalization and sustainability of projects .....	60
Table 11:Model Summary .....	62
Table 12: Analysis of Variance (ANOVA <sup>a</sup> ).....	62
Table 13: Coefficients.....	63

## LIST OF FIGURES

Figure 1: Conceptual Framework .....	36
Figure 2: Whether Education Level Affected Project Sustainability.....	53
Figure 3: Whether Land Tenure affected sustainability of Projects .....	55
Figure 4: Whether Cultural Practices affect Sustainability of Projects .....	57
Figure 5: Whether Social Marginalization and sustainability of projects.....	60



## LIST OF ABBREVIATIONS AND ACRONYMS

ARV:	Antiretroviral
BC:	Before Christ
COVID-19:	Corona Virus Disease 2019
CS:	Communal sharing
DRC:	Democratic Republic of Congo
ESD:	Education for Sustainable Development
EU:	European Union
HIV:	Human Immunodeficiency Virus
Hoch-N:	Hochstetler Hall (University at Buffalo): HOCH-N
IAU:	International Astronomical Union
IWGIA:	International Work Group for Indigenous Affairs
MDGs:	Millennium Development Goals
NCA:	Norwegian Church Aid
NGOs:	Non- Governmental Organizations
RMT:	Relational models' theory
SDGs:	Sustainable Development Goals
SPSS:	Statistical package for the social sciences
UNESCO:	United Nations Educational, Scientific and Cultural Organization
UNICEF:	United Nations Children's Fund
UNIPROBA:	Unissons -Nous Pour la Promotion des Batwa"

## CHAPTER ONE:

### INTRODUCTION

#### 1.1 Background to the Study

Sustainability of development projects refers to the ability of maintaining the achievements manifested in the change of living conditions of the projects 'beneficiaries which will stay there even when the projects phase out. In other words, sustainability of human development projects is what remains when those projects have already closed out. Therefore, the sustainability of development project is viewed as a concept that is methodically lined to the economic, social, institutional, and environmental angles of human society, besides non-human society. It is a state or process characteristic that an enterprise can be sustainable at a specific extent for eternity (European Union, 2017).

A study done in USA stated that sustainability of the project is a recent trendy approach connected to the people, firms, projects, programs, and other enterprises that might need organized and successful manufacturing, supply, publicity, and product distribution. For sustainability of project to happen, certain metrics and criterion need to be established right from the project identification through feasible research, formulation, blueprint, estimation, funding, implementation, monitoring and evaluation. It has often been assumed that collapse of most programs is caused by insufficient appropriate direction of sustainability (Hoyos, Bermejo, & Arto, 2010).

A study that was done in Europe focusing on Romanian students (Grigoriu, Țurcanu, Constantin, Tecău, & Tescașiu, 2025) stated that one of the key goals of the 2030 Agenda for Sustainable for

Development is represented by all-inclusive and non-discriminatory education. The study investigated the effect of projects of education financed by the European Union on the social economic circumstance of Romanian learners concentrating on 8 principal focus areas; life quality, poverty, inequalities in the society, discrimination, juvenile crime, employability, and health. The findings showed that while EU-financed education programs have positively led to socio-economic growth of learners, a sequences of inequalities still exist among learners hailing from low-income households. The results recommended the necessity for extra aimed guidelines. The advanced statistical review exposed the need of early education involvements through EU-financed projects. In addition, they exposed the necessity for blended, aimed tactics to boost opportunities of supporting social equity.

A study that was done in Nigeria by (Ezeudu & Umaru , 2023) which investigated the blocks and hurdles to the success of implementing social development projects in Nigeria, concentrating on their effects on socio-economic development. The results of the study found out that inadequate involvement of beneficiaries limited capabilities, insufficient financing, corruption, and dismal coordination of stakeholders were barriers to the success of the projects. The blocks obstructed the project goals, blocked continuity in handling significant social matters such as social protection, health care, education and poverty. The quantitative review mirrored on major project measures, evaluating success of project success, fund sustainability, involvement of stakeholders, and effect on the targeted population. The measures gave worth understanding into the entire results and performance of social development projects. The study recommended involvement and proper coordination of stakeholders, increment of financing and allotment of resources, improving efforts

of capacity building, and fostering accountability and honesty, and involvement of beneficiaries in designing and implementing projects.

(Naku, Kihila, & Mwangeni, 2021), who did their study in Tanzania postulated that community involvement is paramount in attainment of community sustainable development. Furthermore, they stressed that community participation in development projects that aim at bringing forth developments that are sustainable in the community is so critical. Successful involvement of community in development programs and projects require to be entirely adopted if development sustainability is to be pursued in societies. The authors emphasized that, to attain successful participation of the community, in development projects, it is necessary to be attentive to major aspects that act as determinants and hence make sure that such aspects support the community involvement processes in developing programs and projects. In reinforcement of this point of view, many other authors highlight that some of these major determinants or factors to constructive participation of community could be segmented as socio-economic determinants. Socio-economic determinants can be defined as societal linked economic aspects that incline to and affect each other.

(Warinda, Nyariki, Wambua, & Muasya, 2020) in their study done in Kenya noted that plan of sustainability involves creation of a document that has been written that involves every element of sustainability and structures a track for ranked duties and responsibilities. It is hence very critical for a comprehensive social, political, economic, cultural, educational, and legal analysis of the implementation of project environment. The goals, objectives, mission, goals, philosophy, and core values ought to entirely be highlighted and stated in the proposition. The involvement of advocates and stakeholders is very crucial since it provide some operational readiness.

Beneficiaries evaluation, administration and legal framework studies, rivalry in marketing review, collaborations creation, and analysis of organizations to offer an area for smooth and feasible implementation. Sustainability assessment shapes importance of report, suitability, political gain, viability and flexibility. Other components like analysis of risks, communication and determination and communication of network, monetary assessment, operations plan, employee development, capacity building and training, settings and community analysis combined support in identifying if the program is a stand-alone project, cooperative, Non Governmental or Governmental institutions, a franchise or a joint venture. Furthermore, there must be a demographic study on requirements, incomes, taxes, learning, interests, and other factors of economy, human, and society to confirm modest. The sustainability investigation and philosophical framework are grounded on and links to many other different sectors and fields and has been predisposed to be issue-motivated and is aligned in the decision making direction. The focus differs from the packed carrying capability (sustainability) of planet earth to the social, economic sectors, countries, political institutions, ecosystems, business enterprises, neighbourhoods and individual products, municipalities, research and academic, institutions, patterns of behaviour, lifestyles, home gardens sustainability.

As study done in Uganda by (Moses & Christophe, 2023) did study which purposed to establish the effect of Batwa patterns of settlement on their socio-economic development of Kisoro Municipality. The collection of data was carried out using interviews and focus group discussions and found out that Batwa Ethnicity group encountered numerous hiccups such as lack of land and women were highly marginalized as compared to men. Nevertheless, both genders were vulnerable and faced hurdles such as tribalism, prejudice, and violations of human rights. various

organizations such as churches, individual Batwa institutions such as (UOBDU) and NGOs attempted to resolve the challenge lack of land Batwa encounter but there are nevertheless highly required for their rights implementation and protection to land as other tribes in Uganda. The research suggested that there was necessity for public enlightenment all over Batwa societies and for to recognize that women achieving higher echelons of power is not a degradation of culture but instead a chance for all Batwa powerful individuals who can promote their rights instead of intruders advocating for them. The resettling matter of Batwa was carried out by various stakeholders was an attempt to foster their circumstance, but it is not resolving it since the allocated lands no legal papers that recognize the ownership by Batwa. In times of disputes between Batwa over land, it resulted to be a difficult affair to solve conflicts with no ownership records indicating land territories clearly. Majority of the programs done by non-governmental organizations needed a set up of land, and with absence of land, their execution was obstructed. Nevertheless, such programs must advocate cultures of Batwa in a way that their adored traditions are preserved that projects that purpose to transform them to be like controlling communities. Thus, for appropriate sustainability of such projects, Batwa should be involved on what they think it is appropriate for their communities rather than dictating to them a project which may not be interested in.

In this regard, study concern is to identify if projects of development executed among Batwa communities are sustainable. Many researches have been conducted, but none of these researches has investigated at the development programs carried out in Gitega among Batwa societies from the view point of the of the sustainability determinants, hence bringing out a knowledge gap that the research purposed to fill.

## 1.2 Statement of the Problem

(Ndabarushimana & Ndayizeye, 2024) noted that in regard to the Batwa community in Burundi, a noticeable political perspective was acquired via the Arusha peace deals that stopped the protracted civil violence. In regard to the report by the African Commission's Working group on Population /Indigenous Communities. Burundi has an estimate of 12 million people, sub-divided into 3 ethnic groups which comprise 85percent, 14percent Tutsi and 2 percent Hutu. They explain that the Batwa ethnic group is considered as the most vulnerable community, not ignoring the presence of other susceptible groups. They highlight that Batwa groups are associated with greater levels of impoverishment, inaccessibility to education for their heirs, problems with land tenure, and accessibility to healthcare, non-employability and the threatening issue of their culture extinction. Nevertheless, the Batwa community represents a workforce, offering a potent solution to their problems.

Nationwide in Burundi Batwa group of people are slowly acquiring more representations. Currently, the Batwa community only has one position in parliament representation and 3 Senate seats presentation, as stated in the Constitution of Burundi of 2005(Art 164). Enhancing the involvement of Batwa community in the economic and social growth of the nation is critical for their situation improvement. There has been a prolonged concern in the involvement of indigenous minority groups in reports of human rights. More often than not, these minority groups of people encounter disputes, land dispossession, discrimination, coerced relocation, and land rights denial, all of which are recorded in the reports of human rights (United Nations, 2019). A study by (Amnesty international, 2019) put into emphasis that rights of indigenous people are human rights and recognizes past refusal and infringement of these rights. indigenous and marginalized people

together have the right to characterize them and have their identifications acknowledged as highlighted in standards of world human rights (Minorities and Indigenous Peoples, 2024).

In Gitega province, especially at Mutaho area there is a family called Bahakwaninda from Batwa descent, it has more than 200 Batwa homes and the majority group from Gashanga. Since 2000 Burundi civil fight, majority of people living that area have been facing challenges of life conditions exposing them to vulnerability. However, non-governmental organizations such as UNIPROBA, Christian Aids and CORD have been supporting these communities in creating money generating programs. These projects purpose to boost literacy levels, revolutionize banana farming, enhance breeding of goats received as donations and foster art activities and groups of women concentrated on savings and credit.

Even after all these stepping in, Batwa people and other marginalized communities are still struggling with self-sustenance in terms of finances, and socio-economic blending. They end up as beggars or working for people to meet their basic requirements. Some of the livestock given to them was used for food, while others were disposed of for food and alcoholic drinks. Integration of Batwa group of people and marginalized groups of people fosters their whole and successful involvement in socio-economic development frameworks, used as a resolution to fight inequality and marginalization (Mbaiwa, 2016). However, when the development projects are done in their areas of residence, they fail sustainability test since their education levels are low, land allocation is unfairly done, their cultural practices lag them behind and they are socially marginalized. Therefore, this research was to be conducted to answer to the question of social-economic determinants of the sustainability of development projects among the Batwa in province, Burundi.

### **1.3 Purpose of the study**

The purpose of the study was to analyse the socio-economic determinants for the sustainability of development projects among the Batwa in Gitega province, Burundi

### **1.4 Research Objectives**

The research was guided by the following research objectives:

- i) To examine the effects of education levels on the sustainability of development projects among the Batwa in Gitega province
- ii) To investigate the effects of land tenure on the sustainability of development projects among the Batwa in Gitega Province
- iii) To find out the effects of cultural practices on the sustainability of development projects among the Batwa in Gitega Province
- iv) To find out the effects of social marginalization on the sustainability of development projects among the Batwa in Gitega Province

### **1.5 Research Questions**

The research was conducted using the following questions:

- i) Which role does education levels play in the sustainability of development projects among the Batwa in Gitega Province, Burundi?
- ii) To what extent does land tenure affect the sustainability of development projects among the Batwa in Gitega Province, Burundi?
- iii) What is the effect of cultural practices on the sustainability of development projects among the Batwa in Gitega Province, Burundi?

- iv) What role does societal marginalization play on the sustainability of development projects among the Batwa in Gitega Province, Burundi?

### **1.6 Significance of the Study**

To the government, the research will highly alert of the challenges Batwa people are facing on the ground affecting their development projects in their areas and thus, use the research to improve on socio-economic practices among Batwa people for their projects to be sustainable. The study will be highly essential to local administration as they will guide them on how to concentrate on the strategies of purposed for attainment of more sound and successful in order to foster human development sustainability programs in Batwa societies related matters. Additionally, the authority will perceive what is required to be implemented on their part in order to make the development programs sustainable among these groups of people. To Batwa people, the research will be very critical to community to encourage the children and youth to get education and know their rights so as to ensure the development projects are sustainable. The research will contribute to the pool of literature that is existing in socio-economic determinants and sustainability of development projects.

To the non-governmental and donors will use the research to have an understanding of the Batwa community and when they will be cautious before putting funds in the projects in those communities. The study will help them realize the gap that can inform the future investments. Moreover, the study outcomes will be used by Non-Governmental Institutions and private donors making investments in Batwa related community projects to discern the vagueness that need greater concentration in regard to development programs sustainability existing in Batwa communities. This will place them in competitive edge such that they manage to provide basic

needs for Batwa people to be content in development projects in regard to their sustainability hence developing the Batwa community living conditions. The outcomes of the study are also projected to open doors for improved connection of the Batwa people and various donors putting investments in their areas.

To the whole society of Burundi, the research will show what can exactly be done so that human development projects implemented among the Batwa communities may bring lasting changes that may impact not only the current beneficiaries, but also the future generations. This study covered timeframe of between September 2023 to September 2024. This involved the development of the proposal, research defense, data collection and analysis and examination of the project. The was being confined within Gitega province in Gitega commune since the majority of Batwa people are situated in this province, and most of the Batwa projects are based there. The targeted population of this geographical study 1 area is 200 households. This study content scope focused on determinants for the sustainability of human development projects among Burundi Batwa communities.

### **1.7 Scope of the Study**

This study covered timeframe of between September 2023 to September 2024. This involved the development of the proposal, research defense, data collection and analysis and examination of the project. The study was being confined within Gitega province in Gitega commune since the majority of Batwa people are situated in this province, and most of the Batwa projects are based there. The targeted population of this geographical area is 200 households, and study content scope focused on determinants for the sustainability of human development projects among Burundi Batwa communities.

## **1.8. Limitations and Delimitations of the Study**

### **1.8.1 Limitations of the Study**

It was anticipated that participants would not give the needed information due to the fear of victimization and fear of being investigated. The language and filling of questionnaires would be very challenging in these areas because most Batwa are either illiterate or lowly educated. It was projected that accessing information from these communities would be hard since it is a very closed society with a lot to protect in their culture and therefore, their cultural practices may hinder the collection of data. The researcher anticipated that the research would need quite a long duration to investigate the Batwa community and social economic practices and the study was limited in time and would not get enough of the information needed. The study was limited in terms of area, since it was confined within three provinces which were picked since they were highly inhabited by Batwa people.

### **1.8.2 Delimitations of the study**

To address the limitations raised above, the researcher first obtained introduction letter from Mount Kenya University which was submitted to the authorities representing Batwa group of people to eliminate any fear of being investigated. The researcher also visited the administrators of Batwa people to seek permission from them regarding the collection of information from them. The author also explained to respondents that any information that was collected was purely academic and there was no intention of using that information anywhere else without their consent. The researcher was required to write questionnaires in the language that the respondents were to understand. The researcher also used research assistants who understood the language of the respondents. The time factor can be addressed by the researcher extending this research in the future to address the gaps raised by the study.

### **1.9. Assumptions of the study**

- i). The assumption of this research is that some of the participants would refuse to collaborate with the researcher for the fear that the research is exposing therefore yielding negative impact on their way of life since they maintain that other Burundians hate them.
- ii) The research also presumed that most of the participants would give proper information that would be enough to draw conclusions for this study.
- iii) It was assumed that the sample would be the total representation of the entire population.
- iv)The study assumed that the data would be gathered and analyzed correctly and consistently.



## 1.10 Operational Definition of Key Terms

- Sustainability:** In the context of this work, sustainability is the ability to maintain outcomes of projects with the spirit of beneficiaries' ownership and everlasting change in their living conditions.
- Socio-economic determinants:** The concept is derived from a belief that high social economic societies afford or are provided with set of goods, services, parental actions, and societal links that possibly contribute to the benefit of the community and a concern that a lot of low social economic status community don't have accessibility to those same experiences, resources, hence placing them at danger for development issues.
- Development projects:** A human development project is a project that aims at addressing issues related to human rights, promotion of social justice, and offering viable solutions to complex issues.
- Education level:** it is successfully completing a particular education level which means to the objective of learning accomplishment of that particular level, generally authenticated via the gained skills, knowledge and competencies assessment.
- Land tenure:** This is a situation where land is becoming rarer as a resource; where all people needing land, especially Batwa cannot access it. It becomes extremely hard for land users

to produce food that can help them survive without struggling.

**Cultural practices:**

cultural practices are the manifestations of a culture or sub-culture, particularly regarding the customs and traditions of a certain tribe or another cultural group. The terminology is acquiring significance because of rising controversies over cultural practice rights, which are shielded a lot by many authorities of the earliest people and sometimes marginalized ethnic groups. It is additionally a key element of the area of studies of cultures and is a principal concentration of global works like the United Nations traditional persons.

**Social marginalization:**

Social marginalization is a situation of some group of people being denied or blocked the access to the different resources, opportunities, and rights that are basically available to the community members and which are basic to social unification and adherence to the rights of people within that specific group (for instance employment, housing, civic engagement, due process, democratic participation and healthcare).

## **CHAPTER TWO**

### **LITERATURE REVIEW**

#### **2.1 Introduction**

The second chapter contained reviewed scholarly articles linked to problem under investigation which makes the basis for the identification of the gaps and themes for this study. The main themes have been highlighted in the research objectives. Then, the themes covered sustainability of human development projects among the Batwa communities by focusing on the influence of education levels, the influence of land scarcity, the influence of cultural practices and on the influence of social marginalization. Moreover, it presents the theoretical review of the study related literature. Finally, the chapter will provide the conceptual framework research and provided summary of literature review.

#### **2.2 Empirical Literature Review**

Empirical literature review included education completion and the sustainability of human development projects, land scarcity and human development projects, the cultural practices and human development projects and the social marginalization and human development projects. These components make up the purpose of the current study.

##### **2.2.1 Education Levels and Sustainability of Development Projects**

(Saleem, Aslam, Sang, Dare, & Zhang, 2022) did a study to comprehend the education perceptions and practices of sustainable development in the University classrooms in Malaysia, analysing the all-inclusive, cultural-diverse, and pragmatist techniques of education for sustainable development were linked to their traits, attitudes and knowhow in regard to sustainability. The sample of 1,013

teachers and 2,678 students' perceptions drawn from both postgraduate and undergraduate courses from 4 universities of Malaysia were studied. Likert's scale of five point was applied to record their perspectives concerning education for sustainable development and consciousness of sustainability, and the outcome information was explored by use of analytical and descriptive statistics. The results revealed that all-inclusive, cultural-diverse, and pragmatist techniques of education for sustainable development learning and teaching was comprehensively applied in Malaysia higher institutes of learning. The findings found out a very strong relationship between education for sustainable development methods and sustainability consciousness. This study underlined the significance of education for sustainable for development in the higher learning context.

This research therefore concentrated on finding the effect education for sustainable development on sustainability in four universities in Malaysia. This survey pursued to review if an association between education completion levels the sustainability of development projects. Therefore, it is critical for this study to be conducted in development projects in Batwa community to determine if they produce the similar outcomes as found out in this study.

Another study conducted by (Pauw, Gericke , Olsson, & Berglund , 2015), in Sweden which was to find out if Education for sustainable development affected sustainability. Nevertheless, the empirical literature is lacking connection in the discussion surrounding education for sustainable development whereby choices and execution approaches are highly founded on recommendations of policy and scepticism by specialists. The study used a sample of 2413 learners in grades six, nine and twelve from fifty-one institutions around Sweden to survey the effectiveness for education for development (ESD). By use of descriptive reviews and the approximation of structural equation models, the study findings show that ESD can truly affect the learners results in regard to their

sustainability consciousness. The study outcomes illustrated that the education for sustainable development is plays a significant function in handling sustainable development, thus creating a path for more sustainable future. In spite of finding a significant link between ESD and sustainability, the research was done in schools and therefore, it is significant to apply the current study in development projects to find out if the results will be in consistent with the findings of this study or give different results.

(Suriyankietkaew & Hallinger, 2018), carried out a study on sufficiency thinking under a structure of Sufficiency Economy Philosophy (SEP)-an alternate viewpoint sustainable as UNDP recommended and matched sustainable development goals for UN. In developing the scarce pool of information in the area, this study project empirically explored what school administration aspects/practices, founded on the SEP theoretical framework, may critically forecast improved education sustainable development in learning institutions. The study data drawn from 240 institutions in Thailand. Founded on findings of factor analysis, a study model for educational sustainability was derived and suggested. Results emerging from multiple regression analysis suggested that SEP concepts such as prudence, virtues, concentration of stakeholder and conducive culture, are critical pointers of improved education for sustainable development in Thailand, probably pertinent in other nations.

(Piao & Managi , 2023) conducted a research to examine the connection between individual's educational levels and a sustainable lifestyle in growth of economic and environment protection as illustrated by the rise in home equivalent revenue. The research was cross-sectional in nature. The elements involved level of education, lifestyle sustainability with use of natural resources and homestead comparable income of development of economy. The study use ordered logit and logit model and employed a usual linear regression model after confirmation of the link between

education and income. The results analysis revealed that the greater levels of education were linked to a rise in particular a conducive environmental behaviours and energy consumption sustainability.

(Zikargae, Woldearegay, & Skjerdal, 2022), Did a study that assessed how non-formal environmental education is applied as mediations purposed to empower countryside population in Ethiopia. The survey concentrated on a basically not much adventured areas of the way non-formal environmental education in the guise of program-based education was applied in equipping the population with understanding and abilities. With the use of qualitative data gathering techniques, and thematic review as an analytical tactic, the survey exposed a proof of the essentiality of the community programs for no-school going youths and adults in the gaining basic understanding and abilities. Green sensitizations were revealed to be requisite in sustaining the countryside population lives. As the study illustrated, projects of the community were structured to promote education were synchronized with the pertinent model of project-based education. The institution that propagated this survey, supported by meaningful approach, creates acumens for management of knowledge for more tactics of execution. The primary aim of this project was to enlighten poor populations and their organizations by making sure that surrounding safety and source of income. Communities being vital stakeholders, acquired technical skills and knowledge through sharing of expertise, seminars and trainings. The outcomes also illustrated that majority of the community project members were unschooled before the participation of the program exercise illustrating that there was a necessity to gain rudimental understanding and abilities to work. A lot of members of community participated in the project because the sensitization, marshalling and creating awareness by the local development institution. Nevertheless, many hurdles have been affecting community programs execution. However, most significantly, the research illustrates that the

learning and abilities passed on during EE trainings were critical to the implementation of projects of the community, assisting in improvement of participation of the population in improving quality of environment, hence fostering environmental productivity, techniques of farming, and also circumstances of livelihood. They recommended that project-based education could be applied as an instrument for equipping programs of the community purposed to respond to and enhancing environmental and income hurdles.

### **2.2.2 Land Tenure and Sustainability of Projects**

A study Done by (Ekpodessi & Nakamura, 2023) concentrated on investigating urban environment land tenure. In particular, it purposed to explain the how the security of land tenure influenced the accessibility of housing in town dwellers. The Grand Nokoué, metropolitan which is a combination of 5 cities, in the Republic of Benin, in West Africa, draws concentration because of its peculiar aspects of a developing city. The study focused on key factors of not safe land tenure which are absence of authority recognition, absence of safeguarding from expulsion or eviction, and conventional community-based rights. Additionally, the study investigated the four features of material housing matters, which are, the shantytowns development, precarious housing multiplicity, evection from housing to pave way for public projects, and vulnerability to house evictions under law supervision, to create hypothesis.

This study was done in urban setting and showed the land tenure positively influenced the sustainability of urban housing. The current study wants to find if the same results can be derived from investigating influence of land tenure on sustainability of development projects in Burundi.

A study done by (Clover & Eriksen, 2009) investigated the way the past of land tenure had contributed to sustainability in Southern African Savannahs. The study was done in four countries

namely Zimbabwe, South Africa, Botswana and Mozambique. Two study questions were handled; one, to find out how colonial land tenure and allocation influenced individuals' alternatives and ability to finish, avert or embrace to dangers to their social, human and environmental rights, and what had been the linked impacts on utilizations and degeneration of land. Secondly, to what degree have post-colonial land amendments considered risks to human safety and political sources of degradation of land. The unfair land allocation and legacy of colonies of pluralistic or dual systems land tenure were revealed to be major cause of environmental and agrarian issues. The post-colonial reforms of land had hugely did not consider these critical issues, in some instances even posing risks to economic, environmental and social sustainability. The study concluded that the allocation of resources and land, rights insecurity, and the underprivileged and constraint of Savannah livelihood structures have remained, hindering public safety and surrounding value in the area as well as causing deepening dispute and insecurity.

This research found out there was a risk associated with insecure land tenure and lack of sustainability. It indicated that there were risks linked to social, environmental and economic sustainability if land allocation and resources. Thus, it is necessary to do this research in Burundi among Batwa communities to determine if land tenure amongst them affected the sustainability of their projects.

(Higgins, Balint, Liversage, & Winters, 2018) analysed the innumerable impacts of security of expanded land tenure on village people via a structured analysis of existing proof. The study comprised of gathering and synthesizing the strong qualitative and quantitative study around this topic and was controlled by a change theory that shows required impacts from the major land tenure security-linked practices. Founded on the review of 59 strong research, the research revealed a very strong proof of significant impacts of land tenure security on environmentally-

useful and productive agricultural investments as well as on empowering women, but lacked endorsement for relationships with productivity, credit accessibility and revenue.

This research was about effects of security of land tenure on rural people through systematic analysis of existing evidence. The study failed to tackle sustainability topic, and this gap will be addressed by the current study.

(Wehrmann & Lange, 2019) did a study that aimed at presenting a policy paper to analyse at presenting policy paper is to investigate favourable techniques to obtain rights to land tenure in countryside and towns. This survey focused particularly on sound practices and effects. It discussed instances from the German Technical Cooperation but additionally included proper practices and effects attained by other partners in development. Safe rights for all to land tenure are paramount in reducing impoverishment and creating development that are sustainable, since they support growth of economy, sustainable ecology, and social inclusiveness. Safe land tenure rights make rural and urban population capable of investing in their incomes and homesteads. Unsafe tenures of land place population at displacement risks and may lead to global and local movement flows. That is, it develops a greater social expense and endangers the regional, national and global social integration. However, 70percent of the population of the world is yet to have accessibility to legal framework of land registration hence threatening sustainability of community projects. Worldwide, only 30 nations, own a working nationwide land governance that additionally allows local systems of land tenure. In the year 2014, 30percent of the town and city populations in developing areas resided in shanties with no officially recognized land tenure. The study found that women had indirect rights of tenure allotted by male genders of their family.

(Tsue et al., 2014), who did study and reviewed the impacts of tillable tenure of land and importance on environmental sustainability in North Central Nigeria. The study applied multistage sampling approach to choose 356 participants for the research. A properly-designed questionnaire was used and analysis was done by use of descriptive and inferential analysis. The results exposed that land acquiring was largely at 47.5percent via hereditary. The findings of sustainability of environment index illustrated a mean score of 16.38 percent and only Kogi farmers at 16.83 percent, and Plateau at 18.44percent. Regions in the area of survey had digits more than mean. Moreover, the outcomes of the variance of analysis indicated a positive variation ( $F = 28.28$ ;  $p < 0.01$ ) environmental sustainability in the 3 regions. A significant education coefficient of home heads (0.40), expertise in farming (0.05), contact in extension (0.07), differentiation of crops (0.34), use of irrigation (3.89), safe land tenure (0.82), planting trees (3.13) and applied fertilizer amount (0.35) suggested rise of environmental sustainability increased in these parameters. Nevertheless, density of the population (-0.19) decreased sustainability of environment. The study deduced that safety of land tenure affected essentially on the improvement of sustainability of environment and that utilization of land, combined with activities of management is major tool in pursuing environmental safety. The recommendation for the study was that the government must create a sounder and meaningful tillable land system of title registration that would improve single tenure safety to the tillable land.

Therefore, this finding of this study showed land tenure security affected environmental sustainability and therefore, the current study is important since it will look investigate if land tenure will have the same significant results to the project sustainability.

### **2.2.3 Cultural Practices and Sustainability of Development Projects**

(Karigu, 2012) carried out a study that purposed to evaluate the use of natural resources and finding out preservation of cultural practices and people's viewpoint to identify whether they influence use of resources and ecosystem of L. Baringo management. The sample of the study included 378 participants from three ethnic tribes from Njemps, Pokot and Tugen who reside in the ecosystem of Lake Baringo who were chosen applying simple random sampling technique. The research used descriptive study approach where information was gathered by use of semi-structured questionnaires which were distributed to the heads of households and face to face interview with key informants involving employee drawn from the Ministry of Environment and natural Resources. Analysis of quantitative information was gone through descriptive statistics in form of frequency and percentage, test of chi square. The test of Pearson-chi squared was applied was applied to assess the link between culture and management of environment. The survey exposed that the systems of income for the three ethnic tribes residing in ecosystem of L. Baringo depended on the ecosystem.

The research additionally exposed that 3 ethnicity tribes in and environmental cultural activities, traditions, standards, involving but not limited to believe in God/ supernatural beings, maintaining flora of culture standards, livestock extension and initiation exercises. Test of Chi squared showed that there existed a solid positive association between culture features such as traditions and standards of culture and management of environment ( $\chi^2 = 297$ ,  $df = 2$ ,  $P = 0.001$ ). The research alluded that cultural practices is some basic environmental determinant attitudes which affect attitudes of environment and standards and behaviour. The research suggested that makers of policy us a culture-specific technique in structuring an environmental policy to create culturally proper guidelines, laws, rules, of environment. This is to make sure that community cultures, and

rights, livelihoods and cultures are put in consideration in establishing of regulations, laws, and policies and the societies are diligently engaged in establishing guidelines of management and preservation of sustainable environment (Karigu, 2012). This research discusses about cultural practices and environmental sustainability. Therefore, it is proper to carry out the current study to see if cultural practices affected project sustainability.

A study done by (Jelinčić, Glivetić, & Tišma, 2020) on cultural heritage and development sustainability to find out if there was a link between the two variables. The postulated that there is a strong link between cultural heritage and development sustainability. The aims of development sustainability are to assist preservation of culture heritage and assist in awareness alert about the heritage significance preservation for identity conservation. On contrary, both intangible and tangible cultural heritage can be utilized as an accelerator for the growth sustainability and can significantly enhances social integration and contributing to the self-identity, revitalizing local people and youth to interact with surrounding. Furthermore, cultural heritage can be as an essential resource for making and competition edge and pioneer for introduction of favourable environmental resolutions. The general purpose is to apply cultural heritage as a steer for development sustainability in regard to obtaining a sustainable method in reclamation of countryside, towns and cities which are segments of the heritage. In application of holistic pathway in management of cultural and natural heritage together, hence highly leading to the general, social, cultural, environmental and economic sustainability and the great enhancement of well-being and lives of people.

A survey by (Mpofu, 2012) noticed that the non-governmental organizations(NGO) are basically ways via which international donations are transmitted to the cultural societies in Zimbabwe. Even though these institutions are NGOs, as the name alludes, they are devoid of freedom in their functions as illustrated by the agenda alignment with the interests of donors. At length, the program and conditions of the NGOs are pre-planned and authoritarian as they are created with no communicative inclusion of the cultural group in question in Zimbabwe. This is approved by the international perspectives which are fostered by these institutions, which involve gender, women rights, children rights, education, counselling, agriculture and many more as though growth has got internal ways and ends. It is additionally apparent in this write-up that, culture is a crucial component in growth both as a development determinant and resource. Thus, this write-up postulated that the sustenance of cultural practices and sustainability fairly significant in development sustainability in Zimbabwe. It inferred that, nonetheless that, development which is championed by the non-governmental institutions in Zimbabwe don't put in consideration freedom, self-reliance and autonomy of culture of the cultural groups in the country. The presence of pre-planned schedule and conditions is an evidence to this revelation. Therefore, the non-governmental organizations program and conditions are to a large degree detrimental to cultural sustainability, capital and development sustainability in Zimbabwe. This research showed how dangerous it was for NGOs to do predetermined projects in Zimbabwe. It shows, the predetermined agenda and conditions without involving cultural communities affected the sustainability of development projects. This research therefore, was carried out to determine if truly cultural practices affected sustainability of projects in Burundi.

(Berth, 2017) in his Master's thesis explores the interplay of tradition and sustainable development and subsequently links it to the function of cultural initiatives. The scientific discussion on the idea of cultural sustainability is used as a starting point for this investigation, showing there is dissent amongst researchers on how to integrate culture in the development sustainability framework. One of the main challenges in this context is to distinguish cultural aspects from societal aspects. In order to do so a mixed methods case study integrates the results of a quantitative visitor survey, qualitative expert interviews and a secondary analysis of collected data. From the case study it is concluded that cultural initiatives can be important supporters of cultural advancement by facilitating education and awareness raising for sustainable development, strengthening social cohesion and enhancing the image and identity of a community, which results in indirect economic benefits. Especially the intangible sociocultural impacts are often neglected in conventional assessments.

#### **2.2.4 Social Marginalization and Sustainability of Development Projects**

A study done by (Zhang & Kunová, 2020), noticed people either as an individual or as a group are exposed to prejudice and since particular features or their interactions, like race, income, ethnic group, geographical location, health status, age, sexual orientation, and religion. Whoever is basically prejudiced or discriminated relies on the setting, not limited to influence connections and social traditions in a particular community or society. In some societies, some groups or individuals might be doing exemplary good on parameters of development but are however marginalized or reproached, hence dismissing their equal opportunities right. Sometimes, to belong (or perception of belonging) to a discriminated group of people intensifies the danger of being disadvantaged on inequality basis in regard to services and rights accessibility. The authors stated that the support of empowering the discriminated groups or individuals is hence a vital thing

in attaining sustainable development goals (SDGs). To any developing world, it is crucial to empower community members to discern and chart their individual ways of sensible life embedded in freedom expansion and agency increment. Empowering community members is a right on its own; voicing ideas that are heard and having self-decisions and a way to an end (that is attaining sustainable development results.)

(Kapur, 2018) did a research that focus on the marginalized groups of people empowerment in India; In India countryside and cities and towns altogether contain an extensive segment of the discriminated groups of people; deprived individuals, organized castes, planned ethnicity, other primitive classes, rustics, discriminated workers, primitive socio-economically segments of the community impoverished groups of people are the classification of people that are referred to as marginalized societies. The discriminated group of people are struggling to acquire acknowledgement; they have acknowledged the essentiality of learning; they long to acquire literacy skills and education competences and they would not mind enhancing their lifestyles by acquiring proper job opportunities. The key interventions covered by this study was marginalization of groups of people, and learning in India, empowering economically via micro-loans, and finance for the discriminated societies, inequalities in India, aspects that promote recognition of communities' marginalization, and blocks to the acknowledgement of the discriminated communities. This paper did not show how empowering of marginalized communities will affect the sustainability of projects. Hence, the current study will show the marginalization affect project sustainability among marginalized Batwa community in Burundi.

(Chit, 2013) observed that almost every single member of the community take part in development projects of the community started by World Vision in Myanmar. However, the type of involvement

differs. The research involved socio-economic categorization (the poor, the middle-class and the rich) and all were found in every village of study, and findings illustrated that the poor were discriminated from vital involvement in significant elements of development of the community, particularly in decision making processes and levels of leadership. The cluster of poor people was distinguished by deprivation tag. The author noticed that the power of making decisions was often bestowed to influential community members. Nevertheless, the styles of leadership varied from one village of study to another, illustrating the impoverished can participate in procedures of making decisions when the style of leadership in the societies is involving the marginalized groups. On contrary, if the style of leadership was dictatorial and full of individualism, the marginalization of the poor from activities of development was stood out.

According to Harries (2016), the native Batwa people are progressively being silenced and marginalized which has made them of the vulnerable and endangered groups of people in Central Africa. Customary, a society of hunters and gatherers, sometimes Batwa are yet to leave their practices of indigenous customs and cultures, which contribute to their wealthy custom. Nevertheless, in Uganda just as much as in Rwanda, Burundi and Eastern DRC, the structures of means of support of the community and their existence entirely is in serious risk because of grabbing of land that was set aside by the respective states. Batwa are taken as shying off, customary habits loyalists which portray them as people left behind. Their activities include gathering and hunting of forest resources, feeding food that is not cooked, worship of forest gods, resting in caves, tour guides in the forests and researchers and leaf and animal skins dressing fire lighting by use of dry sticks. Caves, hot springs, rivers, hills, plants and animals are of remarkable importance in their perspective.

## **2.3 Theoretical Literature Review**

A theoretical Literature Review means gathering of interconnected concepts on basis of their theories. (Kothari, 2014). It is a suppositions which are extracted and reinforced by proofs and data. Therefore, while using theories in researches, it is to make researchers comprehend the motive behind the people's behavior. Theories give an overview of how a phenomenon happened or just why things are the way they are. Hence, a theoretical framework justifies or elaborates a Occurrence (Mugenda & Mugenda, 2012). This research used 3 such as Relational theory which explains relationships between events, situations, individuals and groups and Explanatory theory which provides an explanation of a phenomenon well detailed, social or natural behavior, or even event being investigated on, and stakeholders' theory.

### **2.3.1 Relational theory**

Relational theory explains the relationships between situations, events, groups or individuals. It looks at the fact that relationships between variables are strengthened by empirical backups, or data using quantitative methods and analysis of statistics (Ngulube, 2018). Alan Fiske, an anthropologist, explored the Relational Models Theory (RMT) as a person to person relations. He initially developed this theory based on his research in Burkina Faso. The RMT theory suggests that all people interconnections are categorized into four fundamental "relational models": Sharing communally, ranking of leadership, impartiality, and pricing in markets. Additionally, there are two special instances of social and invalid interconnections, where individual do not interrelate based on all mutual belief Fiske's doctoral dissertation in 1985 introduced the concept of relational models theory, which suggests the existence of four innate and culturally universal means of integrating and synchronizing social interactions. These frameworks are believed to be intrinsically motivated and can be implemented differently across cultures.

**There are four relational models:**

**Communal sharing (CS)** relationships are fundamental relationships in which certain defined groups of individuals are regarded as equal, undifferentiated, and interchangeable. In these relationships, individual identities are disregarded, and the focus is on shared characteristics. Intimate and kinship relationships are typical examples of CS relationships. Typical signs of close social interactions include bodily adornments or alterations, coordinated actions, ceremonial practices, communal eating, or physical closeness.

**Authority ranking (AR)** relationships refer to interactions characterized by an unequal distribution of power, where individuals are arranged in a linear order based on a ranked societal aspect. The main characteristic of an AR connection is the hierarchical ranking of individuals relative to one another. Individuals of higher status possess increased authority, reputation, and benefits, whereas subordinates are granted direction and safeguard. Military ranks exemplify a classic example of an asymmetric relationship.

**Equality matching (EM)** relationships are defined by different types of direct correspondence, such as taking turns, reciprocal exchanges, retaliatory actions, or seeking payback in a similar manner. The main focus of parties involved in EM interactions is to ensure that the relationship maintains a condition of equilibrium. innermost associates are a common instance.

**Market pricing (MP)** interactions are based on a concept of proportionality, where individuals focus on ratios, rates, and important characteristics are sometimes simplified to an only one or valuable meter for comparison, such as the transaction cost. Financial payments exemplify the fundamental nature of market participant relationships.

Relational theory therefore will help us to dig deeper and see how individual identities of Batwa people are disregarded, their level of prestige and privileges, their unbalanced state of their relationship and why they keep on comparing themselves to other people in the community. It is relevant to this study since this study will show lack of involvement of Batwa in development projects in their regions how it affected stalling and non-continuity.

### **2.3.2 Theory of Change**

A Theory of Change is specific to project and connected to assessment. It explicitly makes fundamental principle of project, which assists to plant. To implement and to assess the project. Moreover, a change theory is regularly needed by financing institutions as a section of proposals' grants. On contrary, theories of change are a reflection of empirically and theoretical founded understanding on the way change happens that extends over each one project. Basically, a theory of change is inspired by change theories.– (Daniel & Tessa (2022) .

A theory of Change is a technique that elaborates how a particular solution or a group of solutions are anticipated to result into a particular change of development, sketching on a causative review founded on proof availability. In UNDAF project, a rigorous change theory assists directing the sound and proof based schedule tactics development with presumptions and dangers assessed and pointed out (United Nations Development Group). It is fundamentally a broad expression and explanation of how and the reason a needed change is anticipated to occur in a certain environment. It is concentrated specifically on laying out, “complete” what has been explained as the “Middle gap” between what a project or change campaign does (its operations or solutions) and how they result to needed aims being attained. This is achieved by first assessing the needed long-term purpose and then operate from back from these to recognize all the circumstances(results) that ought to be ready (and how they are connected to each other literally) to achieve thee purposed goals. They are all sketched on an Outcomes Framework.” - Centre for Theory of Change.

(United Nations Development Group, 2017), noted that an incredible theory illustrates a customized organizations of phases anticipated to result into required impacts or outcomes. It is a process of meditating about and laying out a change, and basically must be carried out comprehensively, around companies, and not in exclusive with an individual or one group. When properly-sketched, a change theory can support firms put goals and strategies clear, discern the solutions and resources required to attain them, and observe, assess, continuity after sometimes to help to learn, pivots and enhancement. First, challenges of development are complicated, and basically brought about by several elements and ranks that are rooted widely in the way societies work. For instance, opening a law help centres might not result to extra women getting justice services unless matters of traditional vulnerabilities required lawful amendments and childcare difficulties are taken care of also. A theory of change helps United Nations Country Team(UNCT) methodically think through a lot fundamental and sources of development hurdles, and how they affect each other, when identifying what should be addressed as a prime concern to optimize the contribution of institutions like UN to achieve change of development. The theory of change is growingly being used as ways of establishing and regulating collaborations and strategies of collaborations. The agreeing process on theory of change creates various perspectives and suppositions among planners of program, program staff, donors and beneficiaries. It can promote agreement and encourage stakeholders by engaging them beforehand in the scheming procedure and by illustrating to them how their exercise make a contribution to long-run effect. It may assist others to comprehend and assist the organizations like UN to contribute to change, in addition to strengthening partnership with other institutions that purpose to give similar results, resulting to powerful or new collaborations and better interrelations and organization. Theory of change

anchors this study since it shows how collaborations are significant for the sustainability of these projects being erected in Batwa communities.

### **2.3.3 Stakeholder Theory and Project Management as a Behaviour for Sustainability**

Authors widely have come to consensus that stakeholder partnerships can make powerful meaningful augmentations toward sustainability control of corporate institutions (Wang et al., 2022; Freudenreich et al., 2020; Schaltegger et al., 2019; Valentinov et al., 2019; H€orisch et al., 2014; Garvare and Johansson, 2010). The quality of these augmentations has been the image of a vast desire for stake holding theorists. For instance, Schaltegger et al. (2019) outline the stakeholder's theory capability to sustain the sustainability of enterprise case. This is an important augmentation in perspective of the broadly discern deal between economic performance and sustainability (Phillips et al., 2019; Pies et al., 2014; Beckmann et al., 2014; Hahn et al., 2010). Freudenreich et al. (2020) suggested that corporate sustainability control depends on models of enterprise sustainability which need comprehensive stakeholder's engagement. Entirely, H€orisch et al. (2014) showed that stakeholder's theory and management sustainability meet on a shared dream of the business objective and legality of making profits, adopt the complication of the hurdles in sustainability and connect it to strategic management.

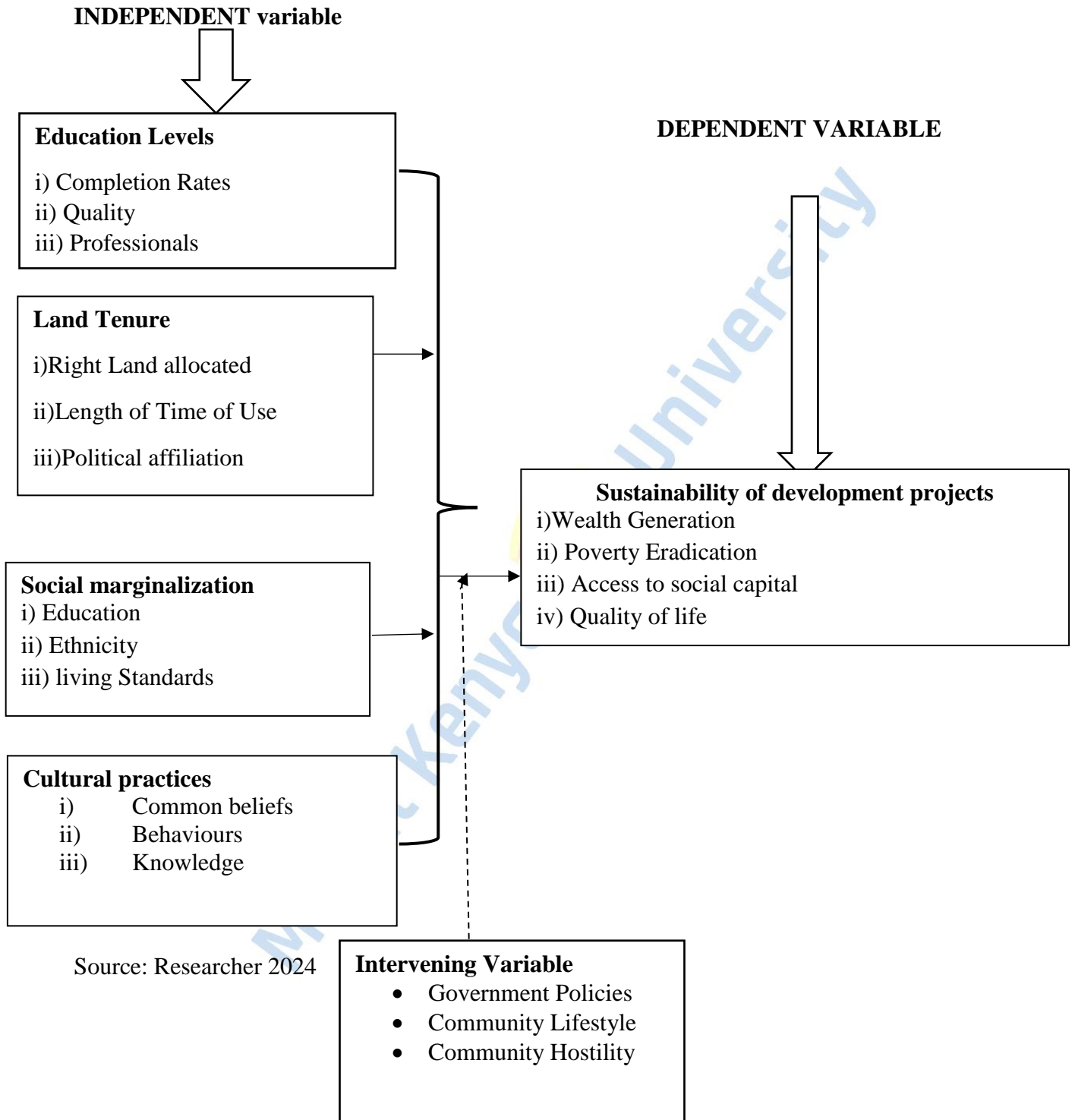
Recently, in several companies' strategic vision, project-based or temporary, there is a comprehension that the created economic exercise involves an effect community and the surrounding, in such a way, that their function as change agents is crucial to the mutual creation of welfare, the shared-value creation, and, in the end, a certain sustainable contribution. Similarly, the involvement of all kinds of stakeholders to which an institution connects indirectly or directly is vital in this method, if conducted from the viewpoint of stakeholder theory or management.

Many streams of studies in recent times concentrating on this theory have increased to supplement management of project from the society viewpoint, connecting components of this sustainability dimension to processes of management and strategy of organizations. First, it outlines the powerful link between stakeholder and the execution and establishment of Corporate Social Responsibility(CSR) in companies, where deliberations or not of certain stakeholders might illustrate the project opportunity or risk in the long run. In addition, the societal aspect is explored in regard to the significance of ranking stakeholders as per their actual desire in the program and how the program management ought to behave in establishing sound partnerships from this review. Even though monetary gain coming from this method is hard to approximate, this approach assists to identify and measure how a dismal societal performance obtained from management of stakeholders impacts on a program (Hahn et al., 2010).

Thirdly, another stream determined has to do with the possible gains offered by the societal approach in management of project, outlining for instance the concept that social performance can be a sign of soundness of alluring capital and investing in organizational sustainability. Furthermore, companies with these features can be more ready to handle a better demand diversity and to address the dangers of acts emanating from stakeholders. Due to this, organizational sustainability encounters the hurdle of integrating social elements to enhance the effect of their economic operation at various ranks, such as in processes of project management. The first of these features outlines the inductive and executional element of the stakeholder partnership, which is meant not simply to determine and evade the practical deals between interests of stakeholder, but to establish possibilities of win-win, particularly if these possibilities look to be feeble and backward H€orisch et al. (2014).

The second important stakeholder collaboration procedure is linked to the transformative shifts of the win-win possibilities that might have been created in the path of the procedure. Part of these possibilities might later be incorporated into the wider organizational environment of interaction of stakeholder, therefore, getting key segment of the business as usual. Nearly all sensible, this collaboration happens via adaptations of the legal policy. While part of these modifications can be done by government institutions out rightly, others might assume the multifaceted corporate self-driven tactics (Beckmann et al., 2014). In viewpoint of their all-inclusive and structural state, the developments in the controlling and routine system cannot offer significant resolutions to distinguishing instances of sustainability issues; nevertheless, they can be so appropriate to those issues that are highly common and broad and hence, manageable to widespread organizational resolutions. Basically, it is not unusual to encounter the political purpose of the organization in its taking part in laying rules, procedures and discourses of finding rule aimed at the progressing organizational structures and the enlargement of the span of the logic of win-win (Pies et al., 2014). This theory was used this research to support it since there is a need for partnerships for Batwa community projects to be sustainable.

## 2.4 Conceptual Framework



**Figure 1: Conceptual Framework**

#### **2.4.1. Education Levels**

Education levels is one social economic determinant of the sustainability of development projects implemented in Batwa regions. Education levels comprise completion rates, education quality and Professionals. From the study, educated and professionals will plan, execute and monitor development projects with ease, they will be ownership of the projects too unlike when their projects are run by other people. There has been a challenge of the Batwa people not having ownership of the development projects implemented in their locations since they are not educated and no professionals coming from their community and therefore even there lack project ownership and sustainability has been a big challenge.

#### **2.4.2. Land Tenure**

Land tenure has been a big issue among Batwa communities since they do not own lands like other communities in Burundi. The Batwa people have been forest people, well known for hunting and gathering and pottery practices. Land Tenure include Right Land allocated, length of time of use, and political affiliation. Batwa are disadvantaged since they have been known to be forest dwellers and therefore, the allocation of land has been unfairly done since they do not have ancestral homes. Batwa are generally landless and do not even have title deeds of the small portion of land they have. They therefore move from place to place which makes the achievement of sustainability of human development projects hard.

#### **2.4.3. Cultural practices**

Batwa are indigenous people who find it hard to stop their ancient cultural practices and adopt to the new ways of doing things. Holding to their ancient cultural practices makes Batwa people to remain behind and therefore, the projects done in their communities cannot be manned by them

due to the backwardness and therefore, this derail the implementations of these projects and consequently affecting the sustainability.

#### **2.4.4. Social marginalization**

The Batwa of Burundi remain victims of the social marginalization. Marginalization of Batwa people not only happen from civilians but also from government institutions in Burundi which worsen the situations. However, recently, the government has erected a Ministry which is run by a Mutwa. Having been marginalized for long by the larger ethnic groups of Tutsi and Hutus, the development projects in their regions are not sustainable since they don't have ownership and do not have control over them.

#### **2.5 Recap; Gaps**

(Suriyankietkaew & Hallinger, 2018), carried out a study on sufficiency thinking under a structure of Sufficiency Economy Philosophy (SEP)-an alternate viewpoint sustainable as UNDP recommended and matched sustainable development goals for UN. In developing the scarce pool of information in the area, this study project empirically explored what school administration aspects/practices, founded on the SEP theoretical framework, may critically forecast improved education sustainable development in schools. This study was done in Thailand and therefore, it was necessary for this study to be done in Burundi and find out if the same results will be realized in Batwa development projects in Burundi.

A study Done by (Ekpodessi & Nakamura, 2023) concentrated on investigating urban environment land tenure. In particular, it purposed to explain the how the security of land tenure influenced the accessibility of housing in town dwellers. The Grand Nokoué, metropolitan which is a combination of 5 cities, in the Republic of Benin, in West Africa, draws concentration because of its peculiar aspects of a developing city. The study focused on key factors of not safe land tenure which are

absence of authority recognition, absence of safeguarding from expulsion or eviction, and conventional community-based rights. The research did not address the allocation of land, time of tenure and political affiliation when it comes to land tenure which this study will address.

A survey by (Mpofu, 2012) noticed that the non-governmental organizations(NGO) are basically ways via which international donations are transmitted to the cultural societies in Zimbabwe. Even though these institutions are NGOs, as the name alludes, they are devoid of freedom in their functions as illustrated by the agenda alignment with the interests of donors. At length, the program and conditions of the NGOs are pre-planned and authoritarian as they are created with no communicative inclusion of the cultural group in question in Zimbabwe. The study was also done in Kenya in some particular communities, thus, it is prudent to carry out this research in Burundi among Batwa community to test if the similar results will be realized.

(Chit, 2013) observed that almost every single member of the community take part in development projects of the community started by World Vision in Myanmar. However, the type of involvement differs. The research involved socio-economic categorization (the poor, the middle-class and the rich) and all were found in every village of study, and findings illustrated that the poor were discriminated from vital involvement in significant elements of development of the community, particularly in decision making processes and levels of leadership.

From the study, it is clear to point out that the scholar did not discuss how the involvement of marginalized groups contributed to development projects sustainability. Therefore, this study illustrated how social marginalization affected development project sustainability among Batwa people in Burundi.

## CHAPTER THREE

### RESEARCH METHODOLOGY

#### 3.1 Introduction

The current chapter analyzed the research methodology. This section also described research design, reason for choosing this design, the population of study, the target population was also highlighted in this segment, data collection method, and how data was analyzed.

#### 3.2 Research Design

According (Khanday & Khanam, 2019), research design is systematic blueprint that is applied by a study to reasonably tackle questions. Research design is quite precise and unbiased. A credible or wrong research design will determine the answers obtained from the research questions. This research used a descriptive survey design which is best in illustrating situations or circumstances. It described features of population or phenomena that is under study. Descriptive design was appropriate in describing the demographic section of the study. The study also used correlation design which brought out the link between independent and dependent variables of the research. It enabled the researcher to establish the links between socio-economic and project sustainability. It allowed total description, ensuring that there was minimal discrimination in the gathering of information and to lessen mistakes in interpretation of collected data. Quantitative data was gathered through structured questionnaires administered to a larger sample of participants. The questionnaires were structured to gather numerical data on certain aspects related to the research questions, such as patterns cultural practices, education completion, marginalization and land allocation. Quantitative data analysis techniques, including statistical analysis, was applied to the

questionnaire responses to provide numerical insights and patterns connected to the objectives of study.

### **3.3 Location of the Study**

The Batwa, are indigenous people which is one of the smallest ethnic group in Great Lake Region in Central Africa, with approximately 80,000 living in Burundi. They are acknowledged as the original residents of the country including the Great Lakes region in central Africa. Scant records exist regarding the historical background of the Batwa people before the era of colonialism, including the time when the Belgian colonial administration was in power. In recent history, there has been a consistent pattern of government-sanctioned displacements of Batwa communities during the 1970s, 1980s, and 1990s. These relocations were often forceful and aggressive, and their purpose was to establish National Parks for the purpose of regulating and promoting tourism, as well as for carrying out developmental activities like cutting trees and plantations of tea. In 1974, a law was proposed to establish national parks as a means to bolster the sector of tourism within a broader initiative. The legislation enacted a complete prohibition on all types of game hunting, encompassing activities such as fishing and animal trapping. This had a profound impact on the Batwa community, whose way of life revolved around traditional practices of hunting and gathering.

The Batwa constitute one of the Burundi 3 ethnic communities. They constitute only 1 % of the Burundi entire population while Hutu are 85% and Tutsi are 14% of the entire Burundi population. Currently, the Batwa ethnic group is not living in forests but, they have been experiencing of the worst of marginalization (Vandeginste, 2014).

In this case, our target population was drawn from projects that are being carried out in the communities where Batwa communities are domiciled and in this case Gitega communes and

participants were drawn from government technical sector representatives, Batwa representatives, Community leaders, and development project managers which people.

### **3.4 Target Population**

(Barnsbee & Nghiem, 2013)described target population as the group of people that the study expects to carry out survey in and infers outcomes. In research, the target population features and any other subgroups must be clearly described. The population traits rely on the literature, the study objectives and background data. 300 hundred people were used for this study as a target population. These were stakeholder groups within the Batwa Regions which were Government technical sector representatives, Batwa representatives, Community leaders, and Development project managers. The study included a wide range of experiences and perspectives by choosing individuals from these diverse groups, enhancing the width and length of the information. The perception and experience of the public on the socio-economic determinants was reflected in the valuable layman's perspective provided by Batwa Representatives. Their opinions shed light on how the community views the Social-economic determinants awareness, accessibility, and fairness. Their perspectives as witnesses, victims, or supporters of those entangled in the socio-economic determinants added to an in-depth knowledge of the impacts of these determinants on the community. Similarly, government technical sector representatives offered special insights into the Batwa levels of education, resources distributions, and difficulties associated with land tenure. Their personal accounts of their interactions with the socio-economic determinants provided insight into the education levels, the challenges they encountered when reintegrating Batwa into society, and the distribution of resources at their disposal for assistance. It was essential to comprehend their viewpoints in order to pinpoint problem areas and enhance successful sustainability of development project. Because of their professional engagement, development

project managers offered insightful information about the guidelines, sustainability processes, and systemic operations of the development projects framework. Their background in planning, budgeting, and the project monitoring and evaluation profession gave them a thorough awareness of the potential and problems that exist within the development project. They provided insights on the real-world difficulties they have in carrying out their responsibilities as well as the effects that rules and regulations have on the way the development projects operate as a whole. The aim of the survey was to have a detailed understanding of the how socio-economic determinants influence the sustainability of development projects among Batwa community in Burundi using this diverse sample population. Through the integration of the viewpoints of these diverse population, the research established the foundation for successful development projects.

In this case, our target population was carried out in projects that are being developed in the communities where Batwa communities are domiciled. The target population of this research was Gitega commune and participants were drawn from government technical sector representatives, Batwa representatives, Community leaders, and development project managers which was a population of 300 people.

### **3.5 Sampling Design and Procedure**

(Kabir, 2016) explained sampling technique as a means through which selection of sample representatives are chosen. Purposive sampling is a deliberate and systematic approach to selecting participants for a study, with a focus on individuals or groups who have distinct insights, experiences, or expertise that are relevant to the research objectives (Thomas, 2022).

A sample of 42% participants was used to give a basic perspective on determinants of the sustainability for human development projects implemented among Gitega commune in Gitega with Batwa communities. The sample units were the government technical sector representatives,

Batwa representatives, Community leaders, and human development project managers. This is for the reason that they possess a basic connection with the topic of the study. The participants were classified into several groups according to their affiliation with the Batwa Community group who are based that is Gitega Commune, and the precise unit of analysis that was relevant to their job or experience. A sum of 129 individuals took part in this survey, with 35 Government technical sector representatives, 28 Batwa representatives, 32 Community leaders, and 34 Development project managers. After purposively selecting the population to participate in the research, the samples were obtained using simple random sampling which denotes that each item of the population had an equal chance to be picked and this eliminated bias since every section of the society was represented.

### 3..6 Sample Size

**Table 1:Sample Size**

Category	Target population	42%	percentage
		Sample Size	(%)
Government technical sector representatives	83	35	27.7%
Batwa representatives	63	28	21.4%
Community leaders	74	32	26.1%
Development project managers	80	34	26.1%
Total	300	129	100%

**Source: Author (2023)**

### **3.7 Data Collection Instruments**

(Goyal, 2022) information gathering tools are tools or devices applied to gather information such as interviews or questionnaires. It is fundamental to identify the tools for collecting data since the study is carried out in various manner and for various aims. The aim of collecting data is to record information with valuable proof that necessitates analysis to result into an establishment of persuasive and consistent responses to the questions posed.

To collect information needed, questionnaires were shared participants of the study. The appropriate method for distribution of questionnaires was drop and pick approach. The data was collected using the open-ended and close-ended questions. Open-ended questions permitted participants to provide more sufficient answer presentations to the asked questions, whereas the close-ended questions assisted in keeping reasonable length and thus, encouraging answers and validity in terms of representatives of the returns.

#### **3.7.1 Administration Data Collection Instruments**

Prior to doing the study, a consent was collected by from the graduate school of Mount Kenya University and the Gitega community leaders. Upon receiving clearance to carry out the research, the researcher went ahead to distribute the data gathering tools. For this particular study, the participants were questionnaires at their jobs during a mutually agreed upon time by both the researcher and the respondent. The study used drop and pick method of administering the questionnaires to the participants in Gitega communities. In addition, the researcher requested any readily available documents necessary for the investigation.

### **3.8 Validity and Reliability**

Validity is an assessment of how well the information obtained via tools aligns with the theoretical concept, particularly in terms of how variables are accurately represented by the collected

information. The validity of this study is enhanced by including many sources of evidence (Oluwatayo, 2012); (Campbell & Campbell, 2008); (Cacciattolo, 2015). The research involved face validity, which involved the subjective evaluation of the researcher and the applicability of measurement tools to determine if the items in the tool are rational, explicit, relevant, and unambiguous. Secondly, content validity means the degree to which an assessment tool demonstrates evidence of accurately and comprehensively measuring the specific domain it is intended to measure. This means that the tool was sufficiently developed and its items were objectively sampled from the complete population. To ensure the credibility of the study tools, the researcher acquired expertise's input in the relevant field, including the research supervisor and lecturers from the School of Social Sciences of Mount Kenya University. This process guaranteed the required editing and amendment of the study tool, hence maintaining its validity.

Odek & Okoth, 2019) described reliability as the degree to which a test can be trusted to produce consistent and stable results. Failure to address reliability could compromise the validity of the research findings. Cronbach's Alpha will be utilized to assess the coefficient of internal consistency, hence confirming the trustworthiness of the data instrument. It evaluated the average value of quantifiable items and their association. The information was gathered and analysis was done by use of SPSS software. The current reliability of the scale and the desired state of affairs were assessed using Cronbach's alpha, which ought to exceed the acceptable threshold of 0.70 (Taber, 2018). The Cronbach's alpha value of the instruments exceeded 0.7, which is considered the usual threshold for reliability, indicating that the research instruments were dependable. The Cronbach's alpha, which was beneath the threshold of 0.7, resulted in the removal of questionnaire items that had negative consequences.

### 3.9 Data Analysis

The data analysis technique had several steps, namely data cleansing, editing, and coding. The obtained information was interpreted using descriptive statistics, comprising frequencies, percentages, means, and standard deviation. Subsequently, the process of programming and verifying errors and any excluded information was carried out (Kothari, 2007). The research findings were visually displayed through the use of various data visualization tools, including pie charts, and tables. The researcher utilized the SPSS software to facilitate the organization, categorization, and analysis of the participants' responses in the study. The collected information evaluated using inferential statistics, specifically correlation and regression analysis. The application of regression analysis was utilized to investigate the socio-economic determinants (education completion, land tenure, cultural practices and social marginalization) on the sustainability of development projects. Campbell and Campbell (2008) regression is a numerical approach that ascertains the linear correlation between two or more parameters and demonstrates that a change in one parameter are associated with changes in another.

The research was conducted under the guidance of the Model Regression Model. Reference: Kothari (2007)

The linear regression model is a statistical technique applied to explain the link between a dependent variable and one or more independent variables. It assumed a linear relationship between the variables and purposes to seek a best fit that reduces the total of the squared variations between the observed and predicted values

The equation is represented as  $Y = \beta_0 + \beta_1X_1 + \beta_2X_2 + \beta_3X_3 + \beta_4X_4 + e$ .

Y represents the dependent variable, which is Sustainability of Development project.

X1 refers to Education Completion, while X2 refers to Land Tenure.

X3 refers to the Cultural Practices

X4 Refers to Social Marginalization.

The symbol  $\beta_0$  represents a constant value.  $\beta_1$ ,  $\beta_2$ ,  $\beta_3$ , and  $\beta_4$  are coefficients used in regression analysis. Uniformized Coefficient of independent variables

The variable "e" represents the error term.

### **3.10 Ethical Consideration**

It is imperative to take into account ethical principles in research. Ethics refer to the established principles or guidelines that researchers are supposed to follow during the course of their study (Cacciatolo, 2015). They assist the researcher in discerning permissible and impermissible conduct in study. In reference to complying with the ethical standard of the study, the researcher obtained conscious consent from the subjects. The non-participating respondents were compelled to take part in this research. So as to maintain the anonymity of the respondents, the researcher was instructed to refrain from revealing their identity in the questionnaire. Participants were notified prior that the drawn data was deliberated for learning purposes and would not be revealed to any third party without their approval. A consultation and obtaining approval were required between the researcher and the relevant authorities involved in this research. The researcher observed precautions to ensure that no identifiable information about the research respondents was disclosed while publishing the results. An agreement was prepared and approved (signed) as a gatekeeper's document, with the conditions that the current study would only be for educational purposes, and that the pieces of information it contains must be kept in a confidential manner. Thereafter, an ethical document was collated to the data collection introduction. The researcher additionally acquired a letter of Ethical Research Committee from Mount Kenya University to gather data.

## CHAPTER FOUR

### RESEARCH FINDINGS AND DISCUSSIONS

#### 4.1 Introduction

Chapter four discusses the research findings, it analyses the findings and presents the findings in a clear way as found by the study in the field data.

#### 4.2. Presentation of Demographic Information

**Table 2 Gender of Respondents**

	Frequency	Percent
Male	81	62.8
Female	48	37.2
Total	129	100.0

**Source:** *Field Data, 2024*

This research was to discover out the gender of the respondents. Table 2 presents the findings of the study as per the gender representation in the population of the study. The results illustrate that 62.8% of the participants were male while 37.2% were female. This is an indication the population under study had many men than women, probably due to the nature of the projects that were being investigated.

**Table 3: Education Level of the Respondents**

	Frequency	Percent
Primary Level	48	37.2
Secondary Level	29	22.5
Bachelor Degree	45	34.9
Master Degree	7	5.4
Total	129	100.0

**Source: Field Data, 2024**

Table 3 presents findings of education level of the respondents. The results show that the largest group of the respondents had completed primary level of education, followed by 34.9 with Bachelor Degree, then followed by those with secondary level education at 22.5%, and holders of Master Degree were only 5.4% of the respondents. This trend was attributed to the fact that most Batwa population was not educated beyond primary level, a small percentage had attained secondary education. For the high respondents with bachelor degree, they were drawn from government representatives, and project managers, and a few Batwa representatives. Respondents with Master degree were project managers. From the findings, it implies that majority of respondents were educated enough to interpret and answer questions as per required by the study. Those who could not understand questions, they were interpreted to them by the researcher and research assistants.

**Table 4: Work Experience of the Respondents**

	Frequency	Percent
Less than 1year	16	12.4
1-5years	64	49.6
5-10years	29	22.5
10years and Above	20	15.5
Total	129	100.0

**Source:** Field Data, 2024

The study was to find out the experience of the respondents and results were presented in Table4 above. The outcomes disclosed that the most participants (49.6%) had work experience of 1-5years, followed by respondents who had work experience of 5-10years who were (22.5%) of the respondents. Respondents with work experience were 15.5% of the population and a few had work of experience less than a year (12.4%). This implies that the sample being investigated were experienced enough to give data that was needed by the current study.

**Table 5: Age of the Respondents**

Item	Frequency	Percent
Below 25years	18	14.0
26-35years	63	48.8
36-45years	29	22.5
46years and above	19	14.7
Total	129	100.0

**Source:** *Field Data, 2024*

The study was to find out the age of respondents and results were presented in Table5 above. The results indicated that most of the respondents (48.8%) were between age of 26-35years followed

by the age between 36-45years. The age between 46years and above and below 25years old were a handful at 14.7% and 14.0% respectively. This is an indication the respondents chosen was vibrant enough to respond to questions and the researcher assumed that they would respond to questionnaires fast and with required responses since they were at work productivity age.

**Table 6: Work Title of the Respondents**

Item	Frequency	Percent
Government Technical Sector	36	27.9
Batwa Representative	27	20.9
Community Leaders	32	24.8
Development Project Manager	34	26.4
Total	129	100.0

**Source:** *Field Data, 2024*

The study was to investigate the job title of the respondents and results were exhibited in Table 6 above. The results found out that most respondents were drawn from government technical sector at 27.9 percent, followed by project managers at 26.4%, community leaders followed at 24.8% and least was Batwa representatives at 20.9%. The findings imply that all required respondents for this study were well represented and therefore, responses of the study were differentiated without biasness.

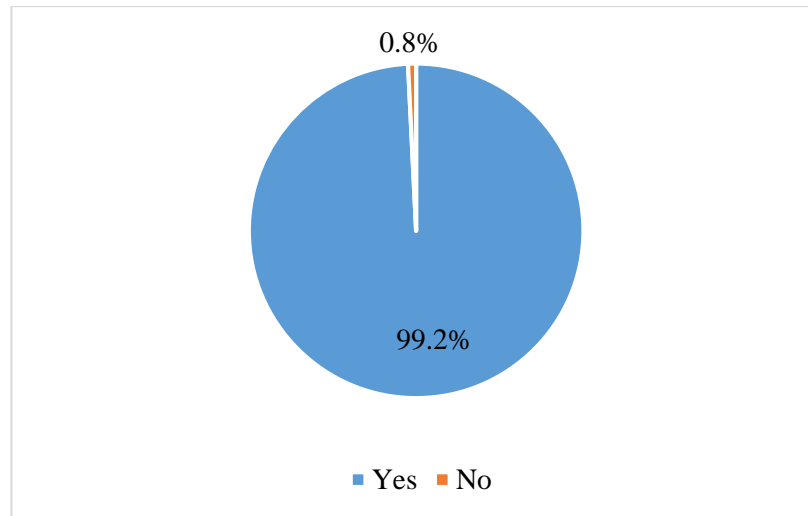
### **4.3 Analysis of Study Objectives**

This section discussed research objectives and outcomes were exhibited in figures and tables as shown below;

#### **4.3.1. Objective One; Whether Education Level Affected Project Sustainability**

The study purposed to investigate what extent did land tenure affected the sustainability of projects in Batwa community. The results were posted as indicated in Figure 2 and Table8 below;

**Figure 2: Whether Education Level Affected Project Sustainability**



**Source: *Field Data, 2024***

This study was to investigate if Education level affected sustainability of projects in Batwa Community. From figure 2 above, it is apparent that participants to a very great extent agreed (99.2%) that Education level affected project sustainability, against a small percentage of (0.8%) who denied education was not necessary for sustainability of projects. The participants explained that many Batwa were not educated and therefore, they were not able to participate in projects fully and especially the professional and expertise contributions. In this case, most projects were run and manned by expertise drawn from the majority communities of Tutsi and Hutu. Thus, they complained most of the projects continuity was at a bleak since they were not monitored and evaluated by locals. This implies that education level was a necessity for Batwa community for projects to be sustainable.

**Table 7: Extent to which Education Level Affected Sustainability of Projects**

Item	Frequency	Percent
Very Great Extent	93	72.1
Great Extent	26	20.2
Neutral	5	3.9
Low Extent	4	2.9
Very Low Extent	1	1
Total	129	100.0

**Source: Field Data, 2024**

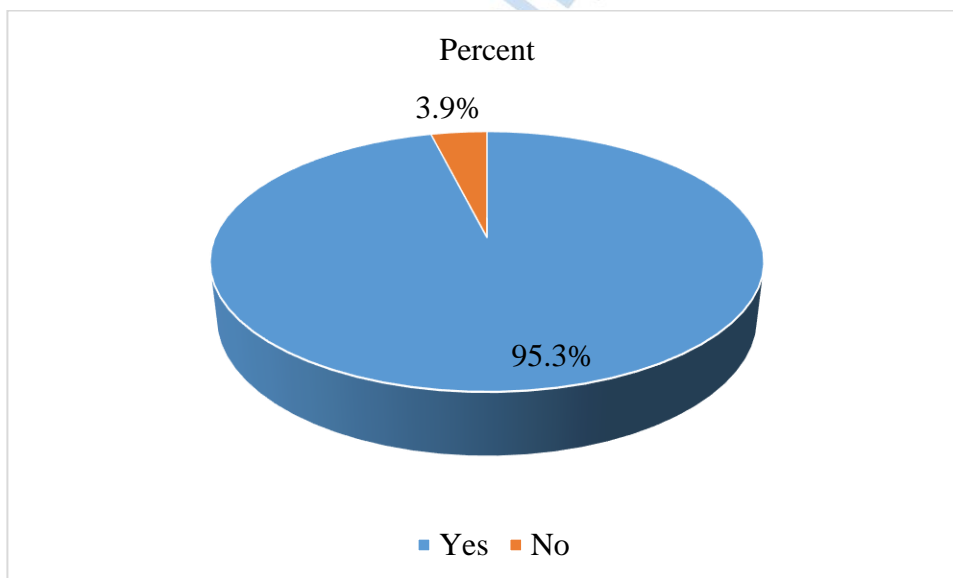
Table 7 illustrates that majority of participants at a very great extent (72.1%) concurred that there was a relationship between education level and project sustainability. 20.2% of the respondents also agreed to great extent that education level affected project sustainability, while 3.9% of participants were neutral. Participants who did not agree with the study were (2.9%) and (1%) at low extent and very low extent respectively. This was an indication that education level is a necessity in the sustainability of projects in Batwa Community. Hence, the community leaders and stakeholders involved should sensitize Batwa communities in value of education ensuring that their children are kept in schools and complete their education. Since they are used to forest life, Batwa community may lack experienced and expertise to drive their projects to sustainability. Therefore, for the projects to be sustainable, a through campaign should be done amongst Batwa group of people to embrace modern education as homegrown solution to have Batwa experts working in Batwa community projects. With ownership of the projects, there will be a likelihood of sustainability as opposed to outsiders working in these projects.

The study is consistent to that (Pauw, Gericke, Olsson, & Berglund, 2015), in Sweden which was to find out if Education for sustainable development affected sustainability. The study used a sample of 2413 learners in grades six, nine and twelve from fifty-one institutions around Sweden to survey the effectiveness for education for development (ESD). The results of this study showed a positive relationship between education level and sustainability of development.

The study was similar to that of (Saleem, Aslam, Sang, Dare, & Zhang, 2022) who did a study to comprehend the education perceptions and practices of sustainable development in the University classrooms in Malaysia, analyzing the all-inclusive, cultural-diverse, and pragmatist techniques of education for development sustainability were related to their traits, attitudes and knowhow in regard to sustainability. The findings found out a very strong relationship between education for sustainable development methods and sustainability consciousness.

#### 4.3.2 Objective Two; Whether Land Tenure affected sustainability of Projects

**Figure 3: Whether Land Tenure affected sustainability of Projects**



Source: *Field Data, 2024*

Figure 3 above illustrates that 95.3% of respondents agreed land tenure affected sustainability of projects, and only a handful of respondents (3.9%) disagreed that there was no connection between the two variables.

**Table 8: Extent to which Land Tenure affected sustainability of Projects**

Item	Frequency	Percent
Very Great Extent	101	78.3
Great Extent	22	17.1
Neutral	4	3.1
Low Extent	2	1.6
Very low extent	0	0
Total	129	100.0

**Source:** *Field Data, 2024*

As shown in Table 8 above, the majority of respondents agreed that land tenure affected sustainability of projects at very great extent (78.3%), those who agreed at great extent were (17.1%), those who had neutral opinion were (3.1%) and at low extent were 1.6%. No respondents disagreed that land tenure influenced project sustainability. From the results, one therefore can deduce that land tenure is an aspect that influences the project sustainability in Batwa Community. Therefore, the stakeholders of Batwa projects together with government of Burundi needs to be vigilant to right land allocated, the time of using that land and legality of land tenure. Batwa have been known to have lived in forests for the longest and therefore, the allotment of land should be lawful and long term so that their projects are sustainable.

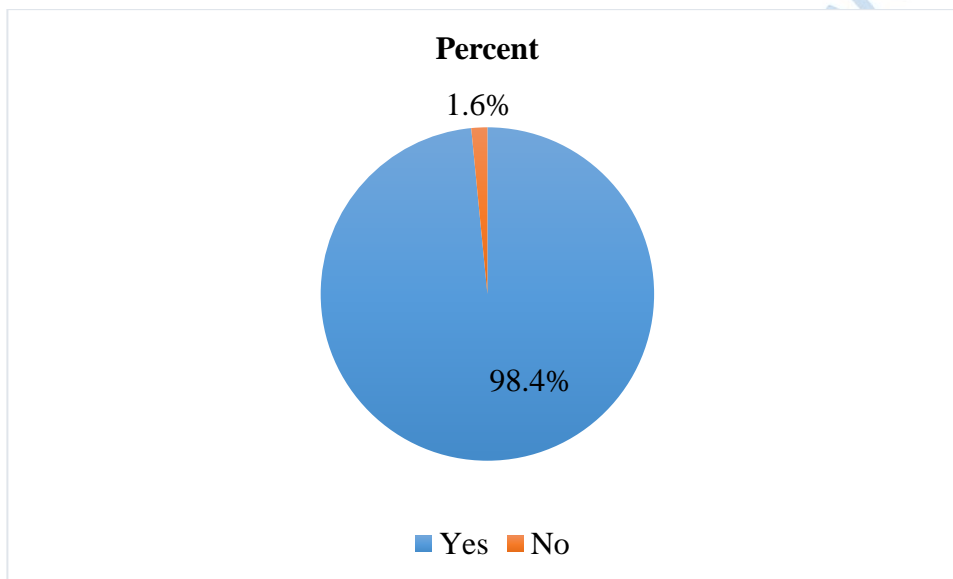
This study was consistent to a study Done by (Ekpodessi & Nakamura, 2023) concentrated on investigating urban environment land tenure. In particular, it purposed to explain the how the security of land tenure influenced the accessibility of housing in town dwellers. investment were

not achieved. The findings revealed lawful land accessibility, the safeguarding the community from uncouth land eviction and conventional-community based rights could significantly affect the development of sustainable urban housing

#### 4.3.3 Objective 3; Cultural Practices on sustainability of Projects

This stud was to find out if cultural practices affected sustainability and results were presented in the figure 4 and Table 9 below.

**Figure 4: Whether Cultural Practices affect Sustainability of Projects**



**Source:** *Field Data*

Figure 4 presents results of the respondents who greatly agreed (98.4%) that that cultural practices affected the sustainability of projects. Just a handful of participants disagreed (1.6%) that cultural practices affected project sustainability. This meant that cultural practices were determinant in sustainability of projects.

**Table 9: Extent to which Cultural Practices affected sustainability of Projects**

Item	Frequency	Percent
Very Great Extent	98	76.0
Great Extent	23	18.2
Neutral	1	0.8
Low Extent	4	3.1
Very Low Extent	3	2.2
Total	129	100.0

**Source:** *Field Data, 2024*

This study sought to explore the extent in which the cultural practices affected the sustainability of the projects. The results were presented in Table 9 above, whereby (76.0%) of the respondents agreed that cultural practices affected sustainability in a very great extent degree. 18.2% of the respondents also agreed that cultural practices influenced the project sustainability. 0.8% of the respondents were neutral, while 3.1percent and 2.2percent of the respondents disagreed at low extent and very low extent respectively that there was no connection between the two variables under study. The findings imply that cultural practices are significant aspects of socio-economic that impact on sustainability of projects. Since the study identify cultural practices as favoring sustainability of projects, then it is prudent if the community leaders, together with government should identify which cultural practices are favorable for the project sustainability. On the other hand, all the stakeholders should discourage unfavorable cultures such as undermining women and not educating children among Batwa community which may undermine development projects and their sustainability.

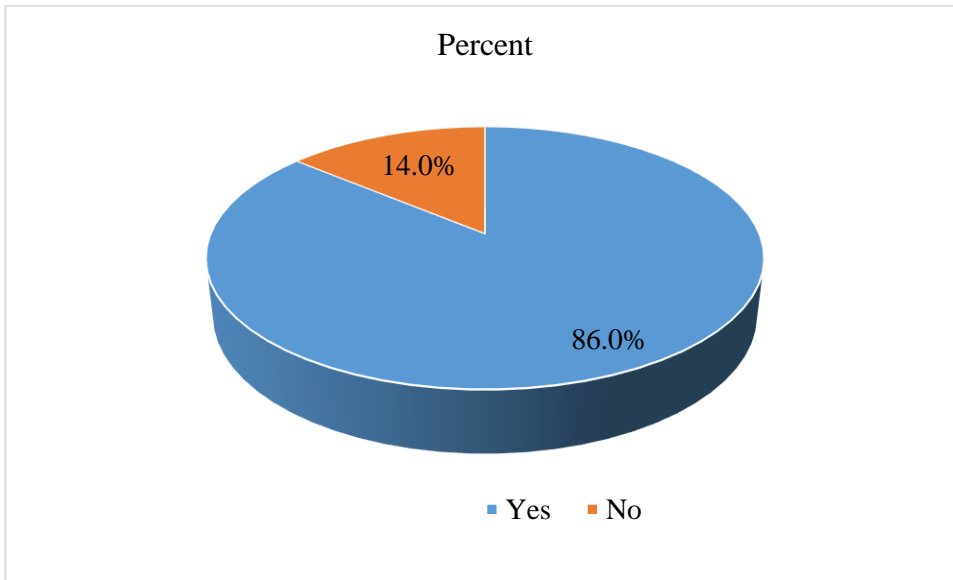
The study was similar to that of (Karigu, 2012) carried out a study that purposed to evaluate the use of natural resources and finding out preservation of cultural practices and people's viewpoint to identify whether they influence use of resources and ecosystem of L. Baringo management. The research alluded that cultural practices is some basic environmental determinant attitudes which affect attitudes of environment and standards and behaviour. This is to make sure that community cultures, and rights, livelihoods and cultures are put in consideration in establishing of regulations, laws, and policies and the societies are diligently engaged in establishing guidelines of management and preservation of sustainable environment.

The study was in consistent with that done by (Mpofu, 2012) noticed that the non-governmental organizations(NGO) are basically ways via which international donations are transmitted to the cultural societies in Zimbabwe. Therefore, the non-governmental organizations program and conditions are to a large degree detrimental to cultural sustainability, capital and development sustainability in Zimbabwe

#### **4.3.4 Objective 4; Social Marginalization and sustainability of projects**

This study sought to establish if social marginalization influenced sustainability of projects. The results were presented in the Figure 5 and Table 10 below.

**Figure 5: Whether Social Marginalization and sustainability of projects**



**Source: Field Data, 2024**

The study sought to explore if social marginalization affected project sustainability. The results were as shown on Figure 5. As illustrated in Figure 5 majority of respondents (86.0%) greatly agreed there was a link between the two variables under study. A small number of participants of 14% on the other hand, felt there was no relationship between social marginalization and sustainability of projects.

**Table 10: Extent to which Social Marginalization and sustainability of projects**

Items	Frequency	Percent
Very Great Extent	98	76.0
Great Extent	13	10.1
Neutral	4	3.1
Low Extent	10	7.8
Very Low Extent	4	3.1
Total	129	100.0

**Source: Field Data, 2024**

The research pursued to find out to what extent social marginalization affected projects sustainability. The outcomes were posted in Table 10 whereby (76.0%) of participants agreed that social marginalization affected sustainability of projects in a very great extent. Another 10.1% accepted that social marginalization influenced sustainability of projects. A handful 3.1% of respondents were neutral in their responses while those disagreed at low extent and very low extent were 7.8% and 3.1% respectively. From the findings, one can conclude that social marginalization was an essential aspect of socio-economic that influences sustainability of projects. Therefore, the government while involving local leaders should find ways of fighting any form of prejudice and discrimination meted towards Batwa. The community leaders should also find ways of integrating Batwa people with other groups of people to learn more about projects and sustainability.

The study was consistent to that done by (Kapur, 2018) who did a research that emphasized that the marginalized groups empowerment in urban and rural area of India, there is a presence of a huge populace fraction of the marginalized groups of people, the discriminated individuals, planned classes, planned ethnic groups, other primitive castes, impoverished, minority personnel, socio-economically marginalized segments of the community, impoverished afflicted individuals are the segments of people that are categorized in marginalized groups. The research recommended the essence of strengthening of marginalized group of people since it fostered development of community.

The study was also similar study done by A study done by (Zhang & Kunová, 2020), who stated that some group of people of individuals are exposed to impoverishment and prejudiced due to particular features or their orientation such as where they come from, what they do, what religion they are in, whether educated or not-educated, social status, sexual orientation, or financial status and many other. They inferred that the core aspect of improving human development, which is

about people empowerment to determine and chase their directions for a logical life which is supported by expansion of autonomy and raising agency. They stated that empowering groups of people in the community is a right by itself (being heard and autonomy of making self-choices, and an endless means (attaining results for development).

#### 4.4 Regression Analysis

**Table 11: Model Summary**

Model	R	R-Square	Adjusted R-Square	Std. Error of the Estimate
1	.857 <sup>a</sup>	0.735	0.726	0.33873

Constant (Predictor): Education Level, Land Tenure, Cultural Practices, Social Marginalization

**Source:** *Field Data, 2024*

Table 11 presents the correlation of the independent variables (socio-economic factors) and dependent variable (sustainability of projects). The findings R shows the simple relationship which is .857 which represents a great extent of correlation of the variables. R –square is 0.736 which illustrates the extent of whole variation in the dependent variable can be described by independent variable. In this study 73.5% can be described which makes the model fit for this study. Therefore, the study can conclude that, there was a very strong relationship between socio economic factors and sustainability of projects.

**Table 12: Analysis of Variance (ANOVA <sup>a</sup>)**

Model		Sum of Squares	df	Mean Square	F	Sig.
1	Regression	39.369	4	9.842	85.779	.000 <sup>b</sup>
	Residual	14.228	124	0.115		
	Total	53.597	128			

**Source;** *Field Data, 2024*

Table 12 illustrates that the regression model prediction of dependent variable positively well. The regression indicate that the relationship is statistically significance since  $p < 0.000$ , which is less than 0.005, and shows that, entirely, the regression model significantly positively predicts the results variable, meaning that the model is a perfect fit for the data.

**Table 13: Coefficients**

Model	Unstandardized Coefficients		Standardized Coefficients	t	Sig.
	B	Std. Error	Beta		
1 (Constant)	1.766	0.345		5.121	0.000
Cultural Practices	0.750	0.379	0.144	1.980	0.005
Education Level	0.550	0.479	0.045	1.000	.0001
Social Marginalization	0.883	0.103	0.475	8.577	0.000
Land Tenure	0.450	0.196	0.408	6.391	0.000

**Source: Field Data, 2024**

Table 13 presents regression coefficient findings. The findings illustrated that the regression analysis was a good fit for independent variables (Education levels, land tenure, cultural practices, marginalization) and dependent variable (sustainability of projects). The overall regression model is thus given as:  $Y = 1.766 + 0.750 X_1 + 0.550X_2 + 0.883 X_3 + 0.450 X_4$ .

The model equation above reveals that holding the variables education levels, land tenure, cultural practices and social marginalization at a constant zero, sustainability of projects in Batwa community will be at a constant value of 1.766. Similarly, any unit rise on cultural Practices, would improve the sustainability of projects by a factor of 0.750. Any unit rise in education level would improve sustainability of projects by a factor of 0.550. A unit increase in social marginalization

would result in improve of project sustainability by a factor of 0.883 and Unit rise in land tenure would lead to an improvement of sustainability of projects in Rwanda by a factor of 0.450.

From the findings can conclude that there was a positively significant relationship between socio economic factors and sustainability of projects considering that all the p-values were  $<0.005$  and  $<0.01$ .



## CHAPTER FIVE

### SUMMARY, CONCLUSIONS AND RECOMMENDATIONS

#### 5.1 Introduction

Chapter 5 demystifies summary of findings, study conclusions, and study recommendations. It will also elaborate and suggest areas of further studies.

#### 5.2 Summary of the Findings

This study asked respondents to elaborate if socio economic factors affected the sustainability of projects. In summary, majority of respondents were in agreement that there was a strong relationship between socioeconomic factors and sustainability of projects in Burundi.

##### 5.2.1 Effect of Education Levels and Sustainability of Projects

The study sought to find out if education levels as one factor of socio-economic influenced sustainability of projects in Batwa communities in Burundi. And findings were presented in Table7 where it was illustrated that majority of respondents at a very great extent (72.1%) agreed that there was a relationship between education level and project sustainability. 20.2% of the respondents also agreed to great extent that education level affected project sustainability, while 3.9% of participants were neutral. Participants who did not agree with the study were (2.9%) and (1%) at low extent and very low extent respectively. This is an indication that education levels were an important factor in sustainability of projects, this is because, expertise, skills, knowledge, competence are catalysts to the development and sustainability of projects. Hence, a campaign of ensuring Batwa children go to school and gain proper skills to run projects on their own without depending on other majority ethnic groups. The participants explained that many Batwa were not educated and therefore, they were not able to participate in projects fully and especially the professional and expertise contributions. In this case, most projects were run and manned by

expertise drawn from the majority communities of Tutsi and Hutu. Thus, they complained most of the projects continuity was at a bleak since they were not monitored and evaluated by locals. This implies that education level was a necessity for Batwa community for projects to be sustainable.

### **5.2.2 Effect of Land Tenure on Sustainability of Projects**

This study was to establish if land tenure as one social economic factors influenced the sustainability of the projects in Batwa Communities. The results on Table8 indicated that the majority of respondents agreed that land tenure affected sustainability of projects at very great extent (78.3%), those who agreed at great extent were (17.1%), those who had neutral opinion were (3.1%) and at low extent were 1.6%. No respondents disagreed that land tenure influenced project sustainability. From the results, one therefore can deduce that land tenure is a determinant of socio-economic that influences the project sustainability in Batwa Community. Therefore, the stakeholders and government should ensure that all Batwa groups of people have documents that show legal ownership of the land, to ensure that their project are long-term and sustainability guaranteed. Therefore, the stakeholders of Batwa projects together with government of Burundi needs to be vigilant to right land allocated, the time of using that land and legality of land tenure. Batwa have been known to have lived in forests for the longest and therefore, the allotment of land should be lawful and long term so that their projects are sustainable.

### **5.2.3 Effect of Cultural Practices on Sustainability of Projects**

This study sought to explore the extent in which cultural practices affected the sustainability of the projects. The results were presented in Table 9 above, whereby (76.0%) of the respondents agreed that cultural practices affected sustainability in a very great extent degree. 18.2% of the respondents also agreed that cultural practices influenced the project sustainability. 0.8% of the respondents were neutral, while 3.1percent and 2.2percent of the respondents disagreed at low

extent and very low extent respectively that there was no connection between the two variables under study. The findings imply that cultural practices are significant determinant of socio-economic that impact on sustainability of projects. Therefore, the government and local administrators should aim at empowering Batwa people to leave cultures that are dragging behind development projects in their regions. The government and other stakeholders should take advantage of cultural practices that are positive and invest in projects that support such cultural practices such as art and weaving among Batwa people. Since the study identify cultural practices as favoring sustainability of projects, then it is prudent if the community leaders, together with government should identify which cultural practices are favorable for the project sustainability. On the other hand, all the stakeholders should discourage unfavorable cultures such as undermining women and not educating children among Batwa community which may undermine development projects and their sustainability.

#### **5.3.4 Effect of Social Marginalization on Sustainability of Projects**

The research pursued to find out to what extent social marginalization affected projects sustainability. The outcomes were posted in Table 10 whereby (76.0%) of participants agreed that social marginalization affected sustainability of projects in a very great extent. Another 10.1% accepted that social marginalization influenced sustainability of projects. A handful 3.1% of respondents were neutral in their responses while those disagreed at low extent and very low extent were 7.8% and 3.1% respectively. From the findings, one can conclude that social marginalization was an aspect of socio-economic that influences sustainability of projects and hence, the government should always work towards empowering marginalized groups such as Batwa to enhance sustainability of projects in the areas they live.

## **5.4 Conclusions**

From the findings the study concluded that socio-economic factors such as education levels, land tenure, cultural practices, and social marginalization are significant in the sustainability of projects. Education level was considered to be significant factor since education completion, professionalism, and expertise were very important aspect in sustaining the projects. Land tenure was also considered important factor in sustainability of projects since the land ownership is a very essential aspect to Batwa community. Length of land use was also fundamental to the sustainability, since with short term ownership, the project sustainability was not realistic for Batwa Community. Cultural practices are also very significant in sustaining projects because some cultures may deter the projects sustainability. For instance, Batwa community are known for traditional way of living and they have not embraced education in a very big way. Lastly, Social marginalization was noted to be a very key factor in influencing project sustainability. It was noted that some Batwa projects stalled due to lack of quality education, social discrimination and thus, the study concluded that it was a factor that can highly affect the project sustainability.

## **5.5 Recommendations**

The study recommended the following;

- i) Much attention should be paid to the socio-economic factors since they influence the sustainability of projects, failure to which the projects will be started and end up not benefiting the community.
- ii) The government of Burundi should be intentional in empowering Batwa community with quality education so that they catch up with current world, and in the long run to be employed in the projects of their community.

- iii) Batwa Community leaders should marshal their members to embrace education as one factor that will equip them in expertise of running their own projects.
- iv) The Community leaders should also encourage Batwa people to have ownership of the projects in their community, to avoid instances of stalling or closure of these projects.
- v) The government of Burundi should also allocate enough land to Batwa communities so that their projects are not stopped due to short term allocations.

### **5.5 Suggestions for Further Study**

This study was carried out in Batwa Communities in Burundi. The study may be done in other community projects to find out if similar results will be realized. The study also concentrated on effect of social economic factors on sustainability of projects, it is therefore, important to research on other factors that affect sustainability such risk analysis, and financial resources.

## REFERENCES

- ACHPR, & IWGIA. (2007). Research and Information Visit to The Republic of Burundi 27 March—9 April 2005 (pp. 2–35) [*Report of The African Commission's Working Group On Indigenous Populations/Communities*].
- Albert, K. B. (2010). Land Rights of Indigenous Peoples in Africa with Special Focus on Central, Eastern and Southern Africa (*Second, pp. 1–391*).
- Amani, J. P. (2009). *Historical developments in Burundi's land law and impacts on Batwa land ownership* (Vol. 1–1, pp. 1–40).
- Amani, J.-P. (2009). *Land Rights and the Forest Peoples of Africa Historical, Legal and Anthropological Perspectives* (Forest Peoples Programme, April 2009, p. 40).
- Anthony, H., Michael. (2010). Indigenous Worldviews, Knowledge and Research: The Development of an Indigenous Research Paradigm. *Journal of Indigenous Voices in Social Work. 1*(1), 1–16. *Approaches*, 1st Edition. Acts Press, Nairobi, Kenya.
- Barnsbee, L., & Nghiem, S. (2013). Target Population; Target populations and sectors that are most vulnerable to climate change and food insecurity. Science Direct.
- Berth, A. (2017). Cultural Sustainability Understanding and Assessing the Sustainability of Cultural Initiatives Based on a Case Study. Uni Graz.
- Brachet, J., & Wolpe, H. (2005). *Conflict-Sensitive Development Assistance: The Case of Burundi*. 1–39.
- Charles, U. (2003). Forgotten people: The Batwa “Pygmy” of the Great Lakes region of Africa. 1–4.
- Chit, Z. (2013). Active Participation of Marginalized People in Community Development and The Role of World Vision in Myanmar. Retrieved from Mro.Massey: [https://mro.massey.ac.nz/bitstream/handle/10179/5783/02\\_whole.pdf](https://mro.massey.ac.nz/bitstream/handle/10179/5783/02_whole.pdf)

- Clift, R. (2007). Climate change and energy policy: The importance of sustainability arguments. *Energy*, 32(4), 262-268. doi: 10.1016/j.energy.2006.07.031
- Clover, J., & Eriksen, S. H. (2009). The effects of land tenure change on sustainability: human security and environmental change in southern African savannas. *Environmental Science & Policy*, 57-70.
- Daley, P. (2006). Ethnicity and political violence in Africa: The challenge to the Burundi state. 25, 657–679.
- Dawson Altmetric, Listen, Original Articles, Leaving no-one behind? Social inequalities and contrasting development impacts in rural Rwanda, Neil M., & Dawson. (2018). *Leaving no-one behind? Social inequalities and contrasting development impacts in rural Rwanda*. 1–14.
- DR. Koenraad, B., & DR. Tomas, V. (2014). Developing' the Batwa of Burundi: On Diverging Perspectives and the Worldview of the 'other.' Ghent University, 1–49.
- EAC Secretariat. (2009). Gender and Community Development Analysis In Burundi (pp. 2–43).
- Ekpodessi, S. G., & Nakamura, H. (2023). Impact of Insecure Land Tenure on Sustainable Housing Development: A Case Study of Urban Housing Lands in the Republic of Benin, West Africa. *Sustainability*, 2-29.
- Emile, M. (1981). Redevances et prestations dans les domaines royaux du Burundi précolonial. 2, 751–768.
- Emile, M., & Vansina, J. (1978). Peuples et rois de l'Afrique des lacs. Le Burundi et les royaumes voisins au XIXe siècle. In: *Revue française d'histoire d'outre-mer* (Vol. 1–65).
- European Union. (2017). Final Report Summary - TESS (Towards European Societal Sustainability). European Union.

- Ezeudu, T. S., & Umaru, M. (2023). Challenges and Barriers to The Successful Implementation of Social Development Programs in Nigeria. *Zamfara Journal of Politics and Development*.
- Goyal, A. (2022). Data Collecting Instruments and Tools in Research. *International Journal of Creative Research Thoughts (IJCRT)*, 53-61.
- Grigoriu, M. C., Țurcanu, C., Constantin, C. P., Tecău, A. S., & Tescașiu, B. (2025). The Impact of EU-Funded Educational Programs on the Socio-Economic Development of Romanian Students: A Multidimensional Analysis. *Sustainability*, 2057.
- Harries, B. (2016). The History and Culture of a Marginalized People in Central Africa. Brussels, 1–4.
- Hempel, Carl G. (1965) *Aspects of Scientific Explanation and other Essays in the Philosophy of Science*. New York: Free Press.
- Higgins, D., Balint, T., Liversage, H., & Winters, P. (2018). Investigating the impacts of increased rural land tenure security: A systematic review of the evidence. *Journal of Rural Studies*, 34-62.
- Hoffmann, T., & Siege, H. (2018). What is Education for Sustainable Development (ESD)? 1–6.
- Horries, & Claire, T. (2016). Protecting Batwa land rights. *Minority Rights Group International, Reuters News Foundation*.
- Hoyos, D., Bermejo, R., & Arto, I. (2010). Sustainable Development in the Brundtland Report and Its Distortion: Implications for Development Economics and International Cooperation. *Researchgate*, 13-34.
- Hughes, A. (2005). *PRSPS, minorities and Indigenous peoples*, London: Minority Rights Group International. An issue paper.

- Ingelaere, B., & Kohlhagen, D. (2012). Situating Social Imaginaries in Transitional Justice: The Bushingantahe in Burundi. *The International Journal of Transitional Justice*. 6, 40–59.
- International Monetary Fund. (2012). Burundi: Poverty Reduction Strategy Paper II.
- Irakoze, Y. D. (2014). Batwa Salute Communities of Hope Support. *Iwacu English News*.
- IWGIA. (2014). Country Technical Note on Indigenous Peoples' Issues-Burundi. 1–3.
- Jackson, D. (2003). Twa women, Twa rights in the Great Lakes region of Africa, London: *Minority Rights Group International*.
- Jackson, D. (2004). “Central Africa: Nowhere to go; land loss and cultural degradation. *The Twa of the Great Lakes*”, WRM’s bulletin N° 87,
- Jelinčić, D. A., Glivetić, D., & Tišma, S. (2020). Cultural Heritage and Sustainability. Spain : Kee ON .
- Johnson, O. (2013). An Overview of Sustainability in Project Management.
- Kabir, S. M. (2016). Sample and Sampling Designs. Researchgate, 168-181
- Kapur, R. (2018). Empowerment of Marginalized Communities. Researchgate.
- Karigu, M. (2012). The Effects of Cultural Practices and Perspectives On Sustainable Community Based Ecosystem Management in Lake Baringo, Kenya. Nairobi: Kenyatta University Library.
- Khanday, S. A., & Khanam, D. (2019). The Research Design. *Journal of Critical Reviews*, 367-374.
- Kopinina, H., & Meijers, F. (2014). Education for sustainable development (ESD) Exploring theoretical and practical challenges. *I5(2)*, 188–207.

- Kothari, R. (2014). *Research Methodologies and Techniques*. New Delhi: New Age Publishers.38–50
- Lewis, J. (2000). *The Batwa Pygmies of the Great Lakes Region*. Minority Rights Group International, UK, 1–36.
- Loomis, T. M. (2000). Indigenous People and Sustainable Development: Building on Indigenous Approaches to Holistic, Self-Determined Development. *World Development*. 28, 893
- Mbaiwa, J. E. (2016). *Tourism development, dispossession and displacement of local communities in the Okavango Delta, Botswana*. Routledge.
- Moses, N., & Christophe, F. (2023). Impact of Batwa Settlement Patterns on Their Social Economic Development: A Case Study of Kisoro Municipality. *International Journal of Academic Pedagogical Research (IJAPR)*, 2-16.
- Mpofu, P. (2012). *The Dearth of Culture in Sustainable Development: The Impact of Ngos' Agenda and Conditionalities On Cultural Sustainability in Zimbabwe*.
- MRG Annual Report 2008. (2010). *Enhancing Batwa Pygmies Leadership in Burundi, Democratic Republic of Congo, Rwanda & Uganda (2007-2009)* (Final Evaluation Report March 2010 30032010). MRG.
- Mugarura, B., & Ndemeye, A. (2002). *Batwa Land Rights in Rwanda*. Minority Rights Group International.
- Mugenda and Mugenda. (1999), *Research Methods, Qualitative and Quantitative*.
- Naku, D. W., Kihila, J., & Mwangeni, A. E. (2021). *Towards Programs Sustainability: An Exploration of Socio-Economic Determinants for Effective Community Participation in*

Development Programs in Tanzania. *International Journal of Sustainable Development Research*, 61- 72.

Ndabarushimana, A., & Ndayizeye, D. (2024). Analysis of the Integration Process of Vulnerable Communities in Social and Economic Development: Batwa Community of Muyange Site Two. *European Scientific Journal, ESJ*, 70-86.

Ntakirutimana, R. (2021). Political Presentation of Batwa Minority in Burundi: *A Promising Government of Unit and Reconciliation*. 1–20.

Orago, N. W. (2017). Socio-economic development and resource redistribution as tools for conflict prevention and post-conflict peace building in fragile societies: *A comparative analysis of Burundi and Rwanda*. 226.

Pauw, J. B.-d., Gericke , N., Olsson, D., & Berglund , T. (2015). The Effectiveness of Education for Sustainable Development. *sustainability*, 15694-15717.

Piao, X., & Managi , S. (2023). The international role of education in sustainable lifestyles and economic development. *Scientific Reports*.

Rad, S., Ates, H. Ç., Delioğlan, Ş., Polatöz, S., & Özçömlekçi, G. (2012). Participation of Rural Women in Sustainable Development – Demographical and Socio-Economic Determinants. 71–84.

Rwantabagu, H. (2009). Problems and Prospects in the Education of a Marginal Minority: *The Case of the Batwa Community in Burundi*. 2, 110–118.

- Saleem, A., Aslam, S., Sang, G., Dare, P. S., & Zhang, T. (2022). Education for sustainable development and sustainability consciousness: evidence from Malaysian universities. *International Journal of Sustainability in Higher Education*.05-216.
- Salmon, Wesley (1990) *Four Decades of Scientific Explanation*. Minneapolis: University of Minnesota Press.
- Salzman, T. (1997). Catholics & Colonialism: The Church's Failure in Rwanda. *Commonweal*, Vol. 124, No. 10. Pp. 17-19.
- Sheila, F. (2005). 8 elements of the project sustainability.1-2
- Suriyankietkaew, S., & Hallinger, P. (2018). Empirical Research on Education for Sustainable Development in Sufficiency-Based Schools . *European Journal of Sustainable Development*, 2
- Suzuki. (2021). Indigenous people's major group for sustainable development. 1-7.
- Sylvestre, N., & Takeuchi, S. (2014). *Dealing with land problems in post-conflict Burundi* (Vol. 5). University of Burundi.
- Tafuni, V., & Heb, J. (2019). Education for sustainable development as a catalyst and the role of students in the future management of HEIs. 1-4.
- Turyatunga, E. (2010). Social Exclusion, Marginalization and the Threat of Extinction of Ethnic Minorities: *A Case of the Batwa Community in Uganda*. 2(3), 57-64.
- UNDP. (2023). Independent Country Programme Evaluation Burundi (pp. 1-70).
- UNESCO. (2018). Technical Cooperation Group on SDG 4-Education 2030 Indicators. 1-49.
- UNIPROBA. (2013). *Projet de Productivité et de Developpement des Marches Agricoles. Rapport Annuel*.

- UNIPROBA. (2014). Rapport Narratif et Financier Intermédiaire Pour le Projet Exécuté dans la Province Kirundo; Promotion de l'Autonomisation des Autochtones Batwa en Citoyens Actifs dans la Participation Citoyenne et la Lutte contre La Pauvreté.
- UNIPROBA. (2015). Rapport d'Activités du IVème Trimestre 2014: Sensibilisation des Batwa à L'Utilisation des Services de Santé.
- United Nations Commission on Sustainable Development. (2007). Framing Sustainable Development, The Brundtland Report – 20 Years On. United Nations.
- United Nations Development Group. (2017). Theory of Change; UDAF COMPANION GUIDANCE. UNDAF (United Nations Development Assistance Framework).
- United Nations. (2019). United Nations Declaration on the Rights of Indigenous Peoples.
- Vandeginste, S. (2014). Political Representation of Minorities as Collateral Damage or Gain: The Batwa in Burundi and Rwanda. *40(1)*, 3–25.
- Warinda, E., Nyariki, D. M., Wambua, S., & Muasya, R. (2020). Sustainable development in East Africa: impact evaluation of regional agricultural development projects in Burundi, Kenya, Rwanda, Tanzania, and Uganda. Researchgate, 3-39.
- Warrilow, F. (2008). The Right to Learn: Batwa Education in the Great Lakes Region of Africa (pp. 1–40). *Minority Rights Group International*.
- Warrilow, F. (2008). The Right to Learn: Batwa Education in the Great Lakes Region of Africa [*Minority Rights Group International*].
- Wehrmann, B., & Lange, A. (2019). Secure Land Tenure Rights for all; A Key Condition For Sustainable Development. Berlin: *Deutsche Gesellschaft Fur Internationale Zusammenarbeit*.

- World Bank. (2018). *Republic Of Burundi Addressing Fragility And Demographic Challenges To Reduce Poverty And Boost Sustainable Growth Systematic Country Diagnostic* (122549-BI; pp. 1–98).
- World Bank. (2020). The World Bank Burundi Integrated Community Development Project (P169315). Washington.
- World Bank. (2020a). International Development Association Project Appraisal Document On A Proposed Grant in The Amount of Sdr43.4 Million (Us\$60 Million Equivalent Of Which Us\$15 Million Equivalent From The Refugee Sub-Window) *To The Republic Of Burundi For The Integrated Community Development Project* (PAD3602).
- World Bank. (2020b). The World Bank Burundi Integrated Community Development Project (P169315) *(Burundi North-East Region Refugee and Host Community Support Project P169315)*.
- World Bank. (2021). Burundi Landscape Restoration and Resilience Project (pp. 2–55) [*Global Environment Facility (GEF) Operations*].
- Zhang, J., & Kunová, A. (2020). UNDP SUPPORT TO EMPOWERING MARGINALIZED GROUPS. UNDP
- Zikargae, M. H., Woldearegay, A. G., & Skjerdal, T. (2022). Empowering rural society through non- formal environmental education: An empirical study of environment and forest development community projects in Ethiopia. *Heliyon* , 2-13.

## APPENDICES

### APPENDIX I: INTRODUCTION LETTER

My name is Raymond Ngandakumana, a student from Mount Kenya University pursuing Masters of Development Studies. I am conducting research on the Social-economic Determinants of the Sustainability of Development Projects among the Batwa in Gitega Province, Burundi. You are requested to support me in collecting information asked in the attached questionnaire. The research is purely academic and therefore, the participants are requested to take part of the exercise in an objective and diligent manner. Participating in ensuring the success of this study will be highly appreciated. In the spaces provided, keenly tick the appropriate response required.



Mount Kenya

## APPENDIX II: CONSENT FORM FOR PARTICIPATION IN RESEARCH

### TITLE OF STUDY

Dear Participant,

I invite you to participate in a research study entitled ----- **SOCIAL-ECONOMIC DETERMINANTS OF THE SUSTAINABILITY OF DEVELOPMENT PROJECTS AMONG THE BATWA IN GITEGA PROVINCE, BURUNDI**

----- I am currently enrolled in the----Master of Development Studies----- at Mount Kenya University and am in the process of writing my Master's project. The purpose of the research is to determine: (Social-Economic Determinants of the Sustainability of Development Projects Among The Batwa In Gitega Province, Burundi. The enclosed questionnaire has been designed to collect information on: ----- Social-Economic Determinants of the Sustainability of Development Projects Among The Batwa In Gitega Province, Burundi -----

Your participation in this research project is completely voluntary. You may decline altogether, or leave blank any questions you don't wish to answer. There are no known risks to participation beyond those encountered in everyday life. Your responses will remain confidential and anonymous. Data from this research will be kept under lock and key and reported only as a collective combined total. No one other than the researchers will know your individual answers to this questionnaire. There are no direct benefits to you for participating in this research. However, you may find it interesting to talk about the issues addressed in the research and it may be beneficial to the field and to future clients or individuals who have experienced similar concerns

If you agree to participate in this project, please answer the questions on the questionnaire as best you can. It should take approximately (2wks) to complete. Please return the questionnaire as soon as possible to enable me complete the project report.

If you have any questions about this project, feel free to contact *the Investigator: Raymond Ngendakumana Mobile No. +257 79 91 26 64 ; Prof. Kennedy Mutundu; [kmutundu@mku.ac.ke](mailto:kmutundu@mku.ac.ke)* If you have questions about your rights as a research participant, please be in touch with the Chairman, Mount Kenya University, Ethical Review Committee, P.O Box 342-01000, Thika.

Thank you for your assistance in this important endeavour.

### CONSENT

I have read and I understand the provided information and have had the opportunity to ask questions. I understand that my participation is voluntary and that I am free to withdraw at any time, without giving a reason and without cost. I understand that I will be given a copy of this consent form. I voluntarily agree to take part in this study.

Participant's signature \_\_\_\_\_ Date \_\_\_\_\_

Investigator's signature \_\_\_\_\_ Date \_\_\_\_\_

### APPENDIX III: QUESTIONNAIRE

#### Part A: Demographic Information (Please tick where appropriate)

1. Gender of the respondent

Male  Female

2. Age of the respondent

Below 25yrs  26-35 yrs  36 - 45yrs  46 yrs and above

3. Level of education of the respondent

Primary Certificate

Secondary Certificate

Bachelor's Degree

Master's Degree

Doctorate Degree

4. For how long have you seen/ been working in human development projects implemented among Batwa communities?

Less than 1 year

1 – 5 years

5 – 10 years

More than 10 years

5. What do you represent in this research:

• Government technical sector

• Batwa people

- Community leaders
- Human development project manager

**Part B: Objectives**

**Influence of education completion on the sustainability of human development projects implemented among Batwa communities**

**1. Respond by YES or NO to the following question:**

Does education completion influence the sustainability of human development projects implemented among Batwa communities?

Yes

No

2. Using a scale of 1-5 where 1= Very great, 2=Great, 3=Neutral, 4=Low, 5=Very low, indicate the extent to which education completion has an influence on the sustainability of development projects implemented in Batwa Communities:

1= Very Great

2=Great

3=Neutral

4=Low

5=Very low

**Effect of Land scarcity on the sustainability of human development projects implemented among Batwa communities**

1. Respond by YES or NO to the following question:

Does land scarcity affect the sustainability of human development projects implemented among Batwa communities?

Yes

No



2. Using a scale of 1-5 where 1= Very great, 2=Great, 3=Neutral, 4=Low, 5=Very low, indicate the extent to which land scarcity affects the sustainability of development projects implemented among Batwa communities?

1= Very Great

2=Great

3=Neutral

4=Low

5=Very low

**Effects of Cultural Practices on the sustainability of development Projects implemented in Batwa communities.**

1. Respond by YES or NO to the following question:

Do Cultural Practices affect the sustainability of human development Projects implemented among Batwa communities?

**Yes**

**No**



2. Using a scale of 1-5 where 1= Very great, 2=Great, 3=Neutral, 4=Low, 5=Very low, indicate the extent to which cultural practices affect the sustainability of human development Projects implemented among Batwa communities.

1= Very Great

2=Great

3=Neutral

4=Low

5=Very low

**Influence of Social Marginalization on the sustainability of human development projects implemented among Batwa communities.**

1. Respond by YES or NO to the following question:

Does social marginalization have an influence on the sustainability of human development projects implemented among Batwa communities?

Yes

No

2. Using a scale of 1-5 where 1= Very great, 2=Great, 3=Neutral, 4=Low, 5=Very low, indicate the extent to which social marginalization has an influence on the sustainability of human development projects implemented among Batwa communities

1= Very Great

2=Great

3=Neutral

4=Low

5=Very low

**Thank you.**

# Mount Kenya University



REF: MKU/ISERC/3620  
TO: RAYMOND NGENDAKUMANA

Date: 17 April 2024

REG: MDS/2019/45107

Dear Sir/Madam,

**RE: SOCIAL-ECONOMIC DETERMINANTS OF THE SUSTAINABILITY OF DEVELOPMENT PROJECTS AMONG THE BATWA IN MUyingA PROVINCE, BURUNDI**

This is to inform you that **Mount Kenya University** has reviewed and approved your above research proposal. Your application approval number is **2664**. The approval period is **16/04/2024 - 15/04/2025**.

This approval is subject to compliance with the following requirements:

- i. Only approved documents including informed consents, study instruments, MTA will be used
- ii. All changes including amendments, deviations and violations are submitted for review and approval by **Mount Kenya University**
- iii. Death and life threatening problems and serious adverse events or unexpected adverse events whether related or unrelated to the study must be reported to **Mount Kenya University** within 72 hours of notification
- iv. Any changes, anticipated or otherwise that may increase the risks or affect the safety or welfare of study participants and others or affect the integrity of the research must be reported to **Mount Kenya University** within 72 hours
- v. Clearance for export of biological specimens must be obtained from relevant institutions
- vi. Submission of a request for renewal of approval at least 60 days prior to expiry of the approval period. Attach a comprehensive progress report to support the renewal
- vii. Submission of an executive summary report within 90 days upon completion of the study to **Mount Kenya University**

Prior to commencing your study, you will be expected to comply with any additional requirements from the relevant authorities in the country where this study will be conducted

Yours sincerely,

**Dr. Alfred Owino, PhD**  
**Chairman, Mount Kenya University ISERC**

The Chairman  
Mount Kenya University  
Ethics Review Committee  
P.O. Box 342 - 0100, Thika

## APPENDIX VII: INTRODUCTION LETTER

# Mount Kenya University



### DIRECTORATE OF GRADUATE STUDIES

MDS/2019/45107

18<sup>th</sup> April, 2024

TO WHOM IT MAY CONCERN

Dear Sir/Madam,


**RE: RAYMOND NGENDAKUMANA- REGISTRATION NO. MDS/2019/45107**

The purpose of this letter is to introduce the above named student who is pursuing **Master of Arts in Development Studies** in the department of **Social and Development Studies** in the school of **Social Sciences**.

The title of the research is "**Social -Economic Determinants of the Sustainability of Development Projects Among the Batwa in Muyinga Province Burundi.**" It has been cleared by the University's Ethics Review Committee (Certificate attached) and now has to proceed to the field to collect data between **April, 2024 and June, 2024**.

Any assistance accorded to the student will be highly appreciated.

Thank you.

  
**Dr. Samuel M. Karenga Ph.D.**  
**Director, Graduate Studies**  
Enc.

Mount Kenya University  
P.O. Box 342 - 01000, THIKA  
Office of the Director,  
Graduate Studies

# APPENDIX VII: AUTHORIZATION LETTER TO COLLECT DATA

Republique du Burundi



**MINISTRE DE L'INTERIEUR ET DU  
DEVELOPPEMENT BCOMMUNAUTIARE  
ET DE LA SECURITE PUBLIQUE  
PROVINCE DE GITEGA  
COMMUNE GITEGA**

Ref: 531-6606...N. J | 447 | 2024

**Objet :** Autorisation de collecte des données pour des fins académiques

A Monsieur Ngendakumana Raymond

Monsieur Raymond,

Faisant suite à votre lettre nous adressée en date du 16 Avril 2024 dans laquelle vous demandez l'autorisation pour la collecte des données dans les communautés Batwa ainsi que dans les autres services, nous avons l'honneur de marquer notre accord.

Vous souhaitant bonne réception, Veuillez agréer, Monsieur Ngendakumana Raymond l'expression de notre considération distinguée.

Fait à Gitega, le 18/04/2024

Administrateur de la commune Gitega

Dr Jacques **NDUWIMANA**

P. o secrétaire Exécutif Permanent  
HARUSI MA Pierre Claver



## APPENDIX IX: TURNITIN REPORT

# SOCIAL-ECONOMIC DETERMINANTS OF THE SUSTAINABILITY OF DEVELOPMENT PROJECTS AMONG THE BATWA IN GITEGA PROVINCE, BURUNDI

*by* Raymond Ngendakumana

---

**Submission date:** 24-Apr-2025 03:15PM (UTC+0300)  
**Submission ID:** 2470377256  
**File name:** Raymond\_Project\_-\_April\_2025.docx (4.24M)  
**Word count:** 21175  
**Character count:** 123736

SOCIAL-ECONOMIC DETERMINANTS OF THE SUSTAINABILITY OF DEVELOPMENT PROJECTS AMONG THE BATWA IN GITEGA PROVINCE, BURUNDI

ORIGINALITY REPORT

<b>13%</b> SIMILARITY INDEX	<b>13%</b> INTERNET SOURCES	<b>6%</b> PUBLICATIONS	<b>4%</b> STUDENT PAPERS
--------------------------------	--------------------------------	---------------------------	-----------------------------

PRIMARY SOURCES

<b>1</b>	<b>ir-library.ku.ac.ke</b> Internet Source	<b>1%</b>
<b>2</b>	<b>erepository.mku.ac.ke</b> Internet Source	<b>1%</b>
<b>3</b>	<b>erepository.mkuit.ac.rw</b> Internet Source	<b>1%</b>
<b>4</b>	<b>erepository.uonbi.ac.ke</b> Internet Source	<b>1%</b>
<b>5</b>	<b>www.globalscientificjournal.com</b> Internet Source	<b>1%</b>
<b>6</b>	<b>www.econstor.eu</b> Internet Source	<b>&lt;1%</b>
<b>7</b>	<b>ir.jkuat.ac.ke</b> Internet Source	<b>&lt;1%</b>
<b>8</b>	<b>www.mdpi.com</b> Internet Source	<b>&lt;1%</b>
<b>9</b>	<b>chss.uonbi.ac.ke</b> Internet Source	<b>&lt;1%</b>
<b>10</b>	<b>www.coursehero.com</b> Internet Source	<b>&lt;1%</b>
<b>11</b>	<b>repository.kemu.ac.ke:8080</b> Internet Source	<b>&lt;1%</b>
<b>12</b>	<b>ir.kabarak.ac.ke</b> Internet Source	<b>&lt;1%</b>

uz.edu.ph

## APPENDIX X: GITEGA PROVINCE MAP



Source: Google Maps